

Table of Contents

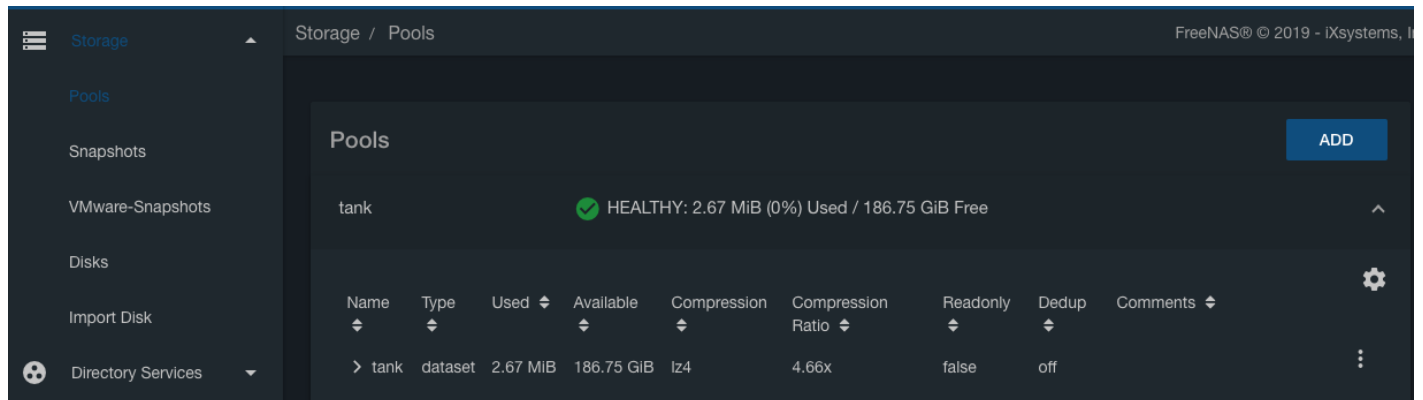
Plex Media Server	1
Create the Media Dataset	1
Add Media Share	4
Map Network Drive	6
Install the Plex Plugin	10
Configure a Mount Point	12
Restart the Plugin	14
Initial Plex Setup	16

Plex Media Server

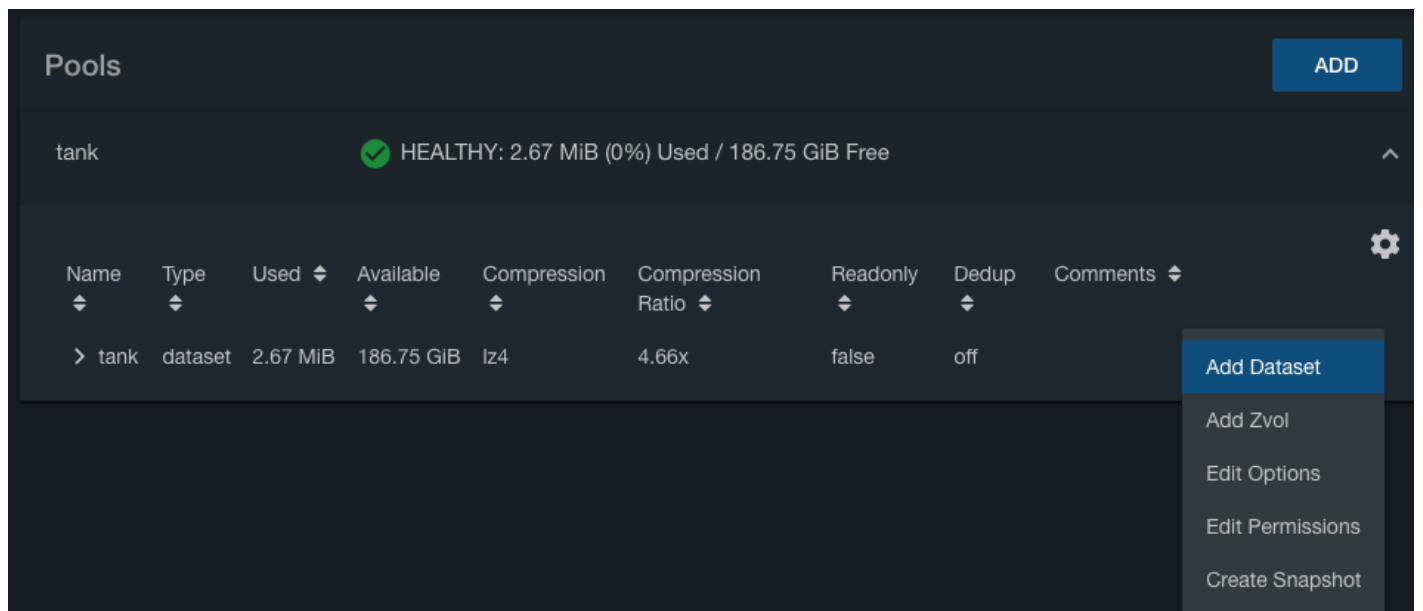
This is a guide for installing the Plex Media Server plugin.

Create the Media Dataset

Click “Storage” in the left column, then “Pools”.



Click the three vertical dots to the right of your pool, and select “Add Dataset” from the pop-up menu.



You'll see the “Add Dataset” window.

Storage / Pools / Add Dataset

Name *

Media

Comments

Sync

Inherit (standard)

Compression level

Inherit (lz4)

Share Type ?

Unix

Windows

Mac

Enable Atime

Inherit (on)

ZFS Deduplication

Inherit (off)

Case Sensitivity

Sensitive

SAVE CANCEL ADVANCED MODE

- In the “Name” text box type a name for the new media dataset (Fester very imaginatively used **Media**).
- Leave the “Compression level” drop down selection box (2) at its default value (**Inherit (lz4)**).
- In “Share Type” I selected **Windows** simply because most of the clients on Fester’s network are Windows machines.
- Now click on the “Save” button.

Your dataset will be created. Click the > next to your pool name to show the datasets.

Pools

tank HEALTHY: 2.79 MiB (0%) Used / 186.75 GiB Free

Name	Type	Used	Available	Compression	Compression Ratio	Readonly	Dedup	Comments
tank	dataset	2.79 MiB	186.75 GiB	lz4	4.44x	false	off	
Media	dataset	127.88 KiB	186.75 GiB	Inherits (lz4)	1.00x	false	off	
TestShare	dataset	127.88 KiB	186.75 GiB	Inherits (lz4)	1.00x	false	off	

If all goes well the new dataset will be listed in the “Storage” page. Click the three vertical dots to the right of the new dataset, and click “Edit Permissions” from the pop-up menu.

tank	dataset	2.79 MiB	186.75 GiB	lz4	4.44x	false	off	
Media	dataset	127.88 KiB	186.75 GiB	Inherits (lz4)	1.00x	false	off	
TestShare	dataset	127.88 KiB	186.75 GiB	Inherits (lz4)	1.00x	false	off	

- Add Dataset
- Add Zvol
- Edit Options
- Edit Permissions**
- Delete Dataset
- Create Snapshot

You'll see the “Edit Permissions” window.

Storage / Pools / Edit Permissions

Path
/mnt/tank/Media

ACL Type ?

Unix

Windows

Mac

Apply User ?

User
TestUser ?

Apply Group ?

Group
TestGroup ?

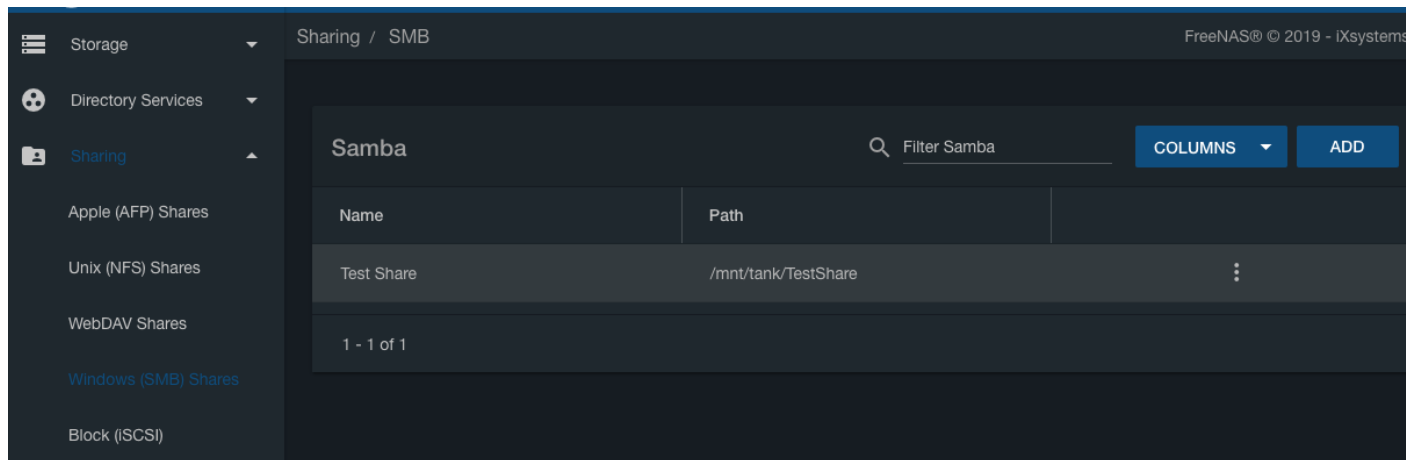
Apply permissions recursively ?

SAVE **CANCEL**

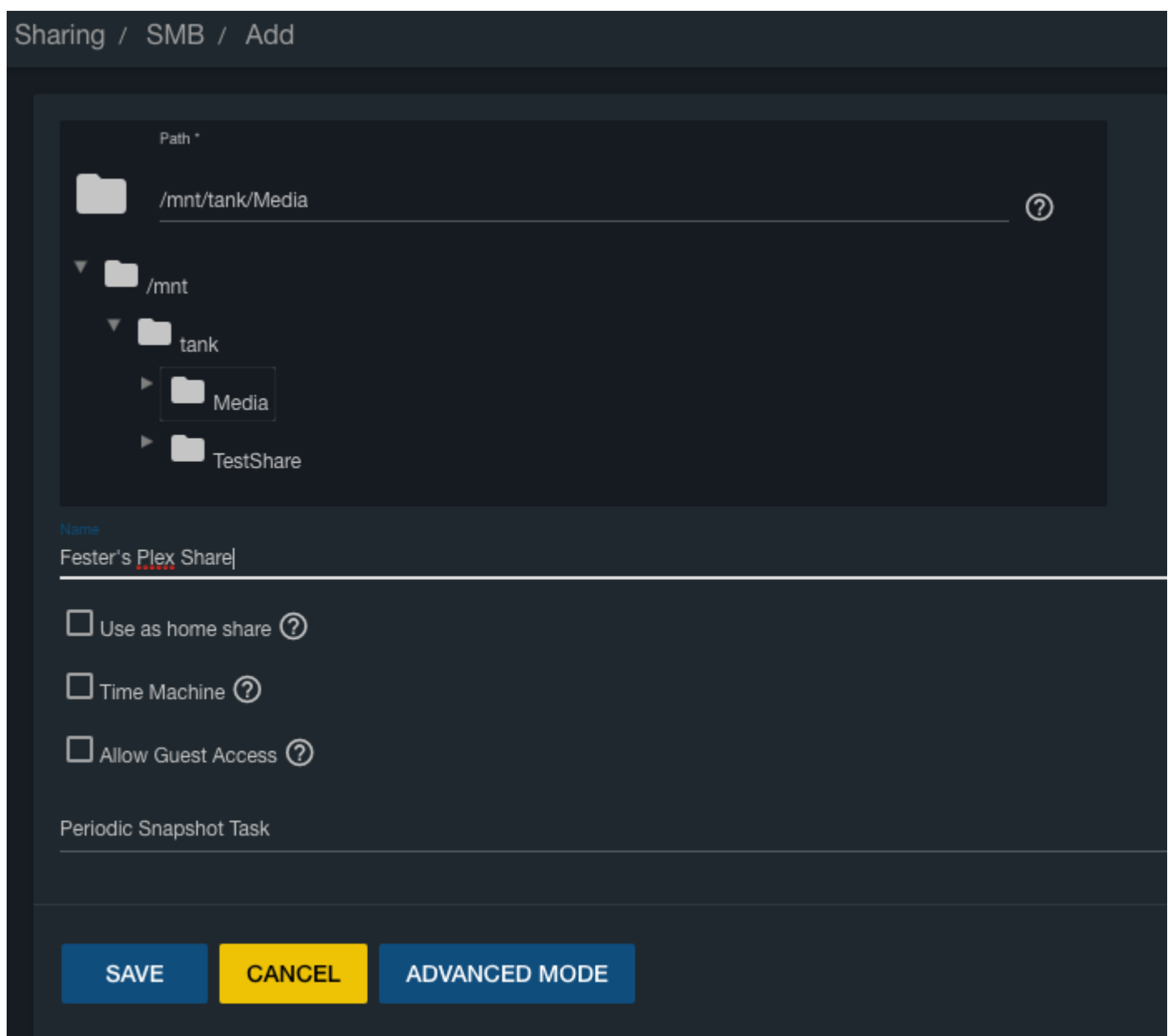
- In the “User” drop down selection box select whatever user you created when we created the experimental share (in Fester’s case this was TestUser).
- In the “Group” drop down selection box select whatever group you created when we created the experimental share (in Fester’s case this was TestGroup).
- Now click the “Save” button.

Add Media Share

Now click “Sharing” in the left column, then “Windows (SMB) Shares”.



Click the "Add" button.



A new smaller window will pop up. In the “Path” section click the folder icon to the left, then browse to find your new Media dataset.

- The “Path” text box should now display the chosen dataset.
- Do not tick the “Use as home share:” tick box at the moment.
- Give the share a name in the “Name” text box.
- Do not tick the “Allow Guest Access:” tick box.
- Now click the “Save” button.

Name	Path	
Fester's Plex Share	/mnt/tank/Media	⋮
Test Share	/mnt/tank/TestShare	⋮

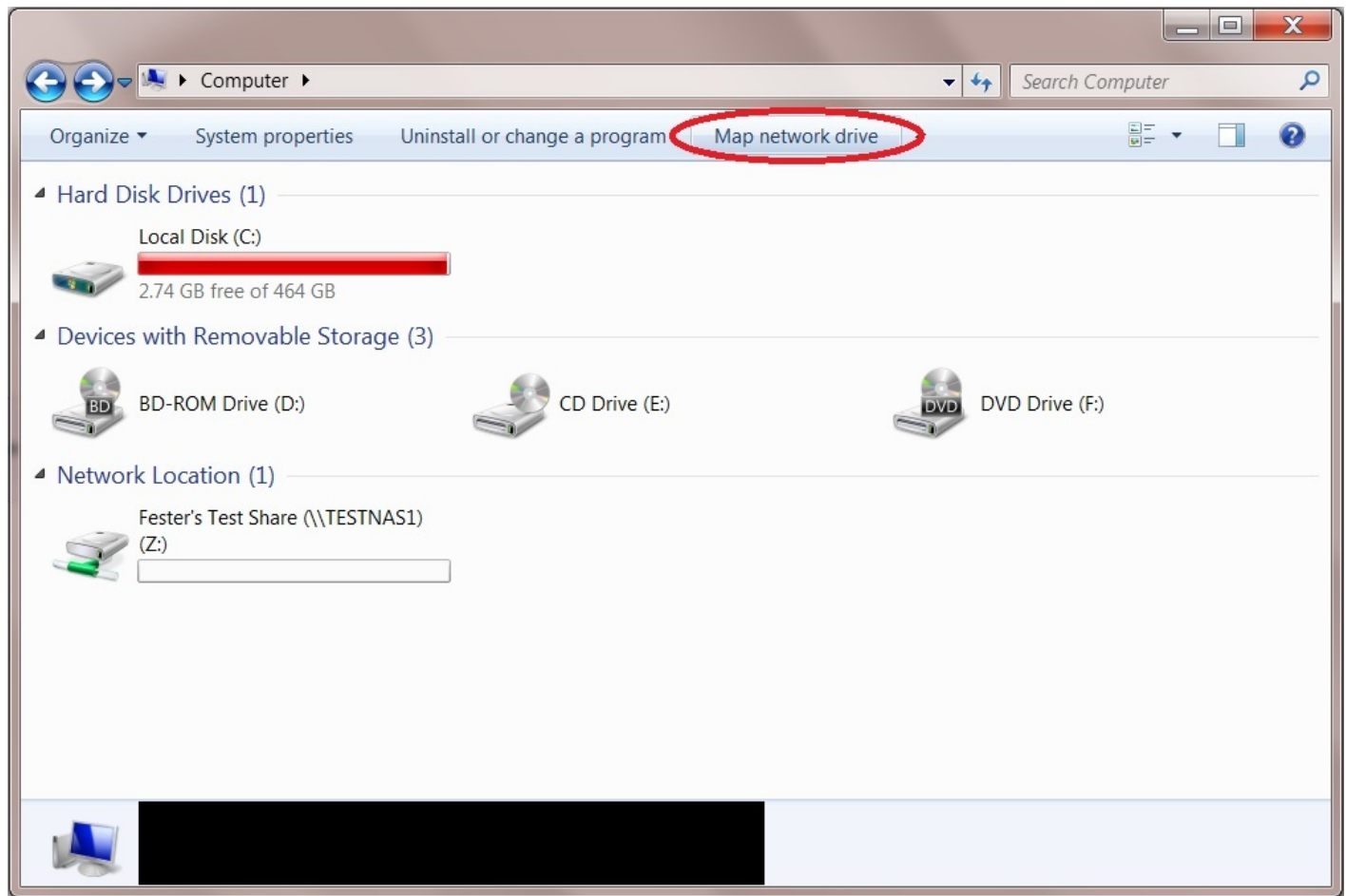
1 - 2 of 2

If all goes well you will see the newly created SMB share entry.

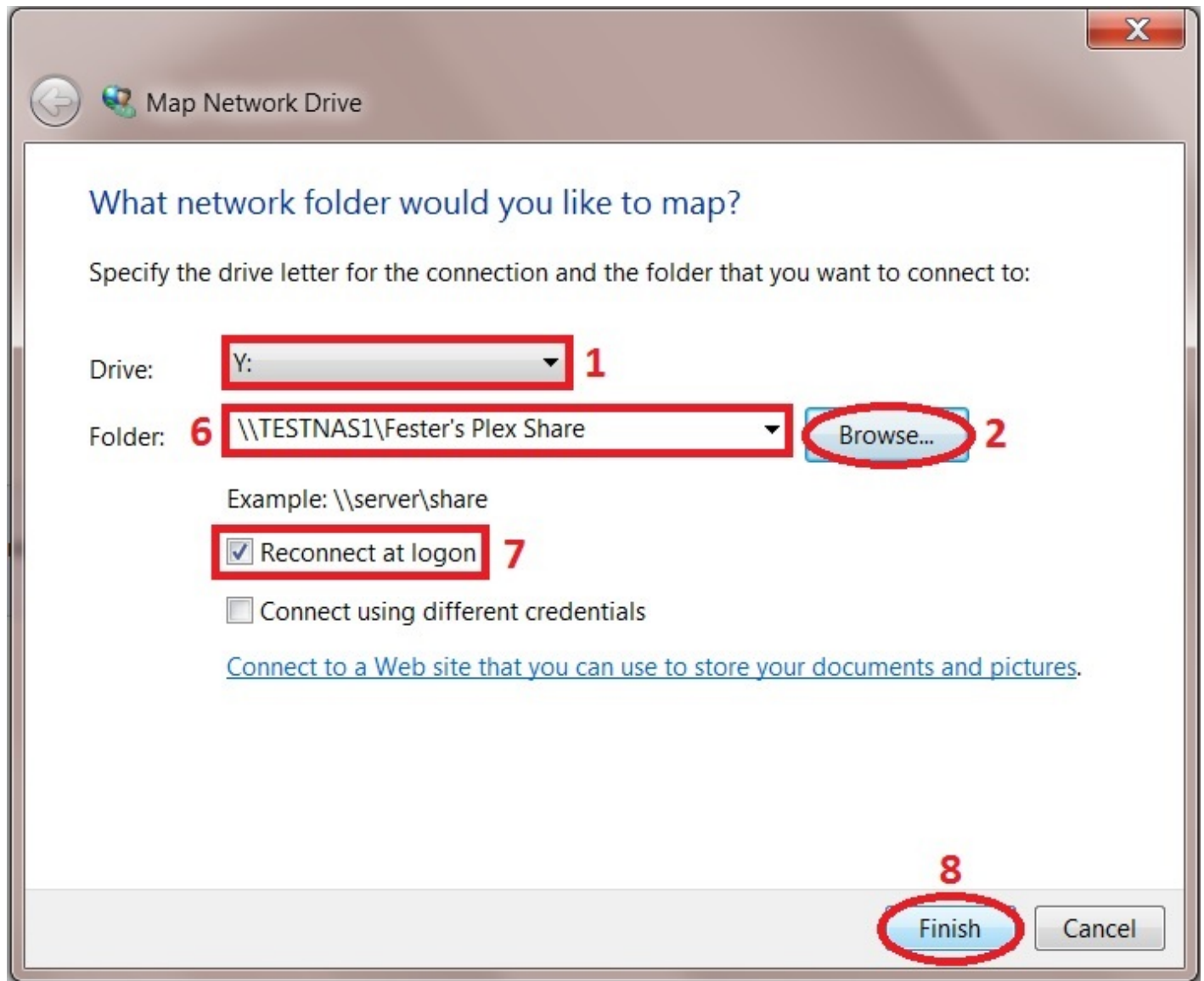
Give the server some time to get the share up and running, then it is time to map the new network folder to a drive letter.

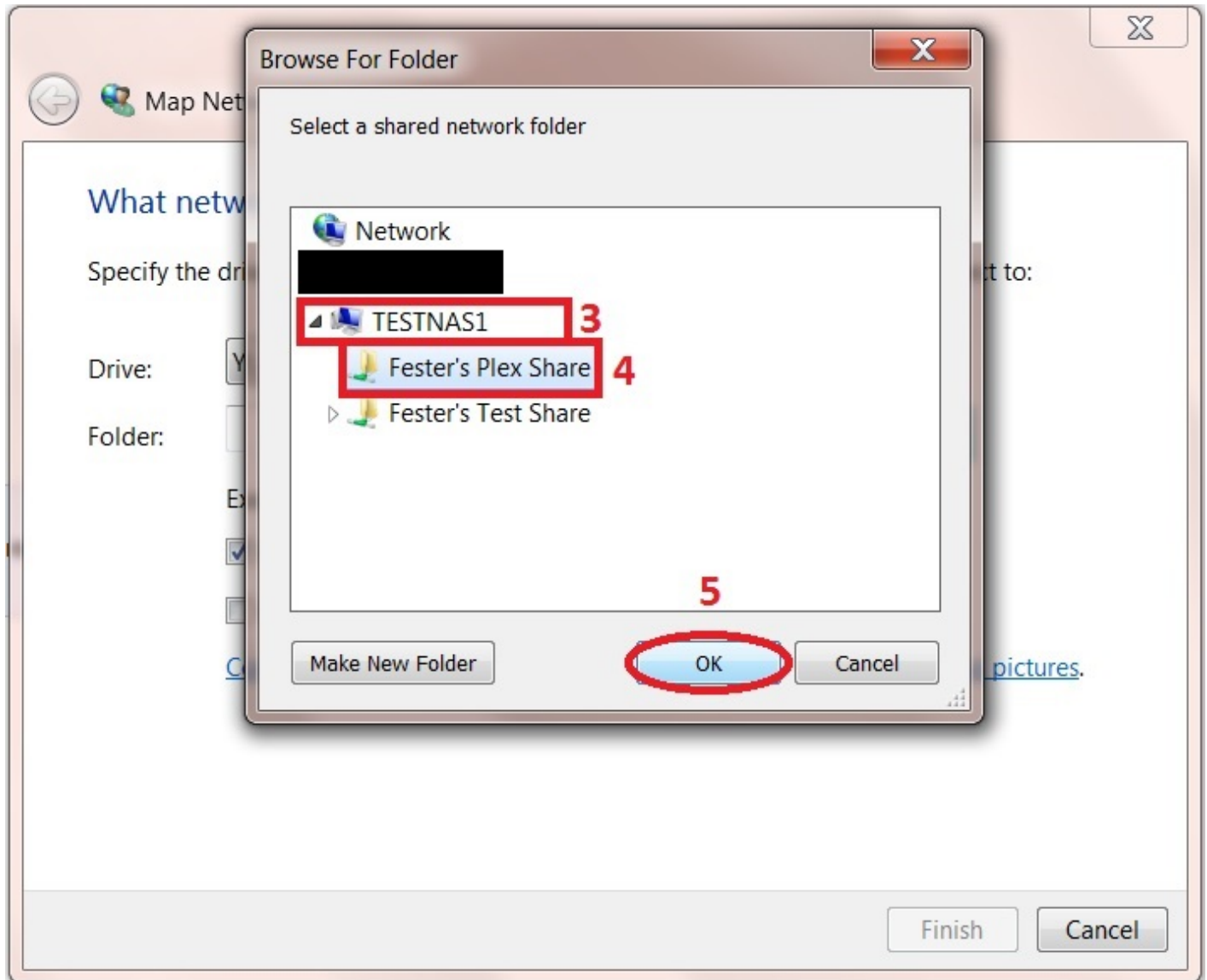
Map Network Drive

On the Windows client click on the “Start” button and go into “Computer” (this was on a Windows 7 machine). This should bring up a window that shows all the hard drives and any other devices connected to the Windows computer. Click on the “Map Network Drive” button.



- From the “Drive:” drop down selection box (1) chose the drive letter you wish to assign to the shared folder (Fester accepted the default Y letter).
- Now click the “Browse...” button (2). This will cause a window to pop up.
- Navigate to the location of the shared folder by clicking on the server (in this case TestNAS1) (3) and then clicking on the shared folder itself (in this case Fester’s Plex Share) (4).
- Now click the “OK” button (5).
- The shared folder’s path name should appear in the “Folder:” text box (6).
- Tick the “Reconnect at logon! Tick box (7).
- Now click the “Finish” button (8).

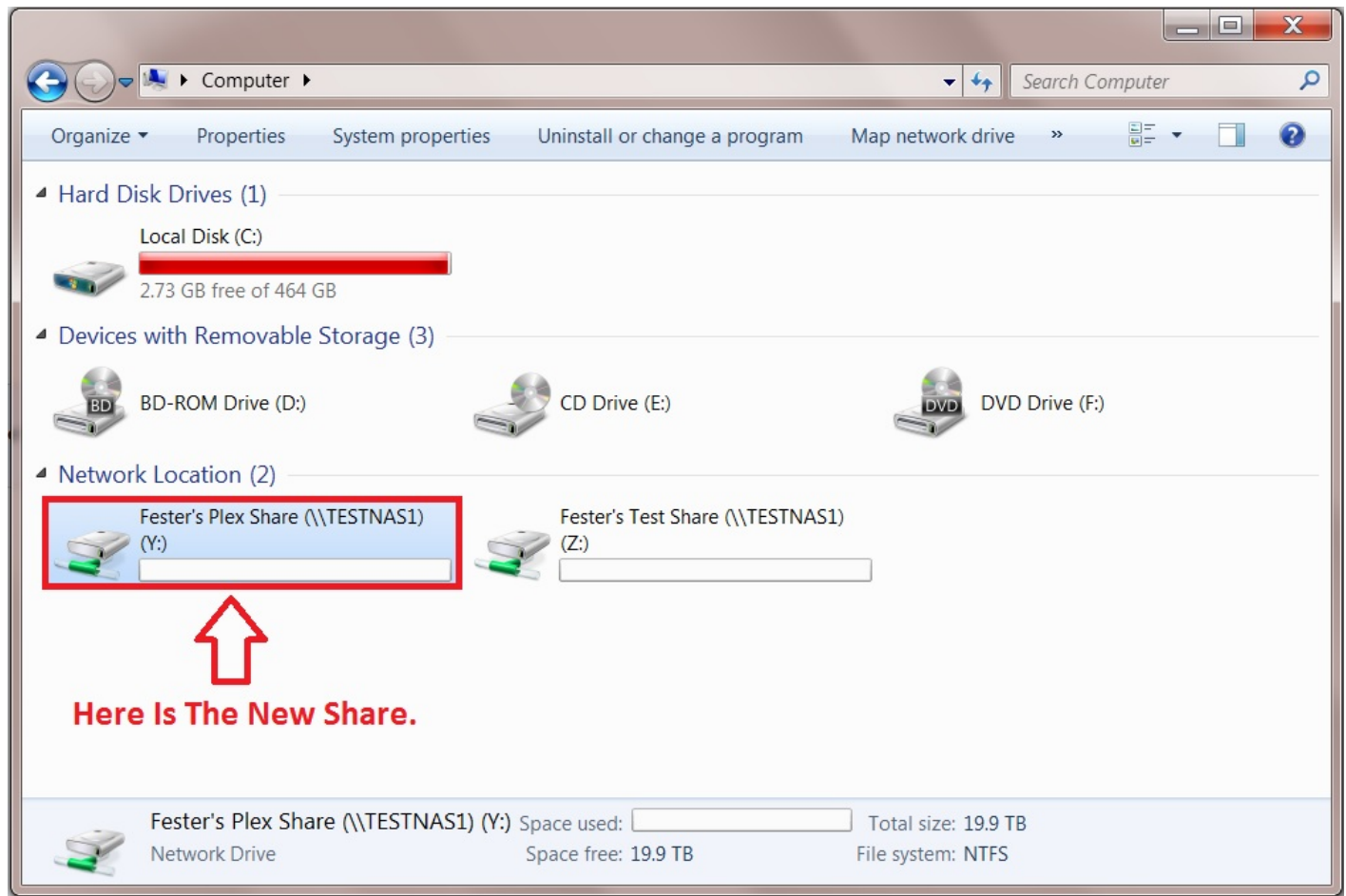




If all has gone well you should find yourself in the shared folder. Here you can create other folders and save files. Test this to make sure there are no permissions problems. You should create a folder here for each type of media you want to use with the Plex Media Server (Movies, TV shows, Music, etc.).

Now copy a couple of media files (i.e. music, films, etc) into this folder. We will need these later to check the Plex media server.

The shared folder will now appear as another drive on your system and should look something like this.



Install the Plex Plugin

Now click "Plugins" in the left column, than "Available", and wait for the list to appear. If the Plugins page does not populate then check the DNS servers are configured properly in FreeNAS.

Available Plugins

Filter Available Plugins

COLUMNS

Name	Description	Version	Official
nextcloud	Access, share and protect your files, calendar	N/A	true
Plex Media Server	The Plex media server system	1.15.5.994	True
Plex Media Server (F	The Plex media server system	1.15.5.994	True

Scroll down and find the plugin you want (in Fester's case this was the PlexMediaServer). Then, within that text area, scroll sideways if necessary until you see the three vertical dots on the far right. Click on those dots, and click "Install" from the pop-up menu.

Available Plugins				Filter Available Plugins	COLUMNS
	Description	Version	Official		
	Access, share and protect your files, calendar, photos, music, and more.	N/A	True		
plexmediaserver	The Plex media server system	1.15.5.994	True		Install
plexmediaserver (F)	The Plex media server system	1.15.5.994	True		

You'll then see a window prompting you for network settings for the plugin.

Plugins / Add FreeNAS® © 2019 - iXsystems, Inc.

Plugin Name
plexmediaserver

DHCP ?

IPv4 interface *
em0

IPv4 Address *
192.168.1.75

IPv4 Netmask *
24

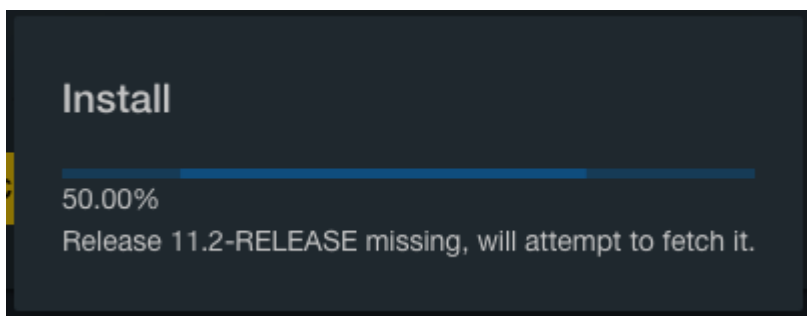
IPv6 Interface

IPv6 Address
? IPv6 Address

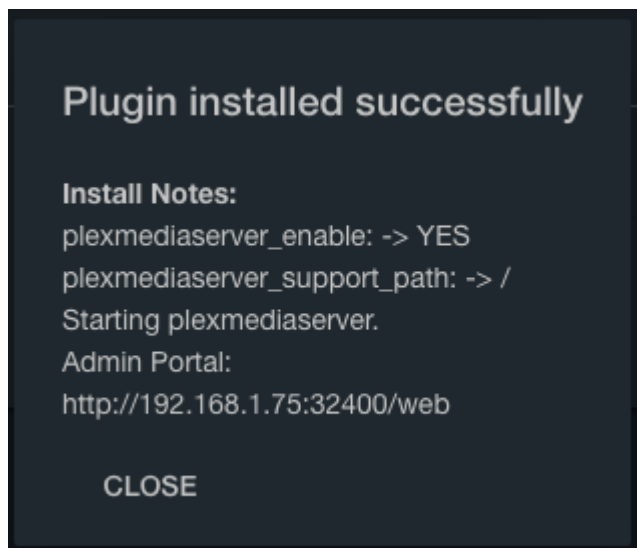
IPv6 Prefix
? -----

SAVE CANCEL ADVANCED PLUGIN INSTALLATION

DHCP is ticked by default, but is discouraged—services running on your network should generally have static IP addresses. Untick the DHCP box, select a network interface from the dropdown, enter an IP address that's available on your network, and select an IPv4 Netmask (in most cases, you'll use 24). Then click "Save." An installation window will pop up for a few moments.



If all goes well, you'll see this once installation is finished:



Click the “Close” button. You'll be taken to the Installed Plugins page, showing this plugin as installed.

<input type="checkbox"/>	Jail	Status	IPv4 Address	IPv6 Address	Version	Release
<input type="checkbox"/>	plex	up	192.168.1.75/24		N/A	11.2-RELEASE

1 - 1 of 1

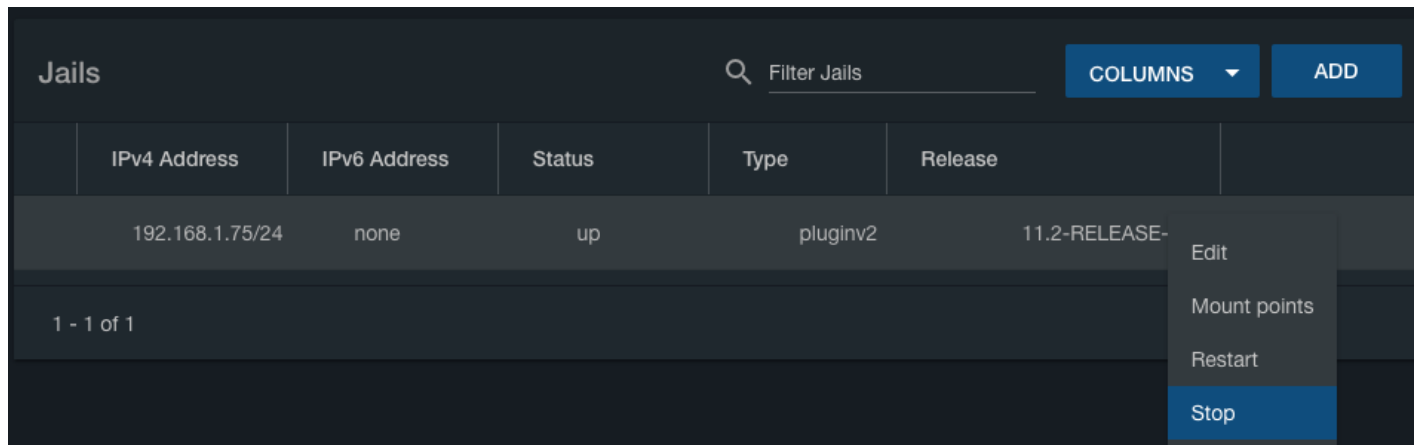
Configure a Mount Point

The plugin is installed, but it can't see the Media dataset we created. To address this, we'll need to add a mount point to the plugin. Begin by clicking on “Jails” in the left column.

<input type="checkbox"/>	Jail	IPv4 Address	IPv6 Address	Status	Type	Release
<input type="checkbox"/>	plex	192.168.1.75/24	none	up	pluginv2	11.2-RELEASE

1 - 1 of 1

You'll see your jails listed (in this example there's only one). Scroll sideways in the list if necessary to see the three vertical dots to the far right.

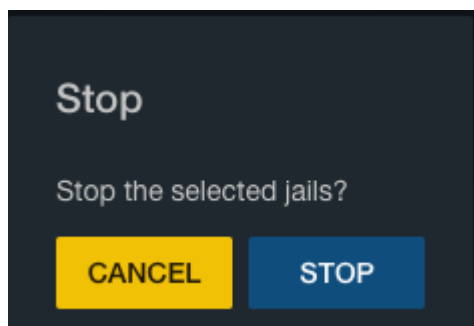


	IPv4 Address	IPv6 Address	Status	Type	Release	
	192.168.1.75/24	none	up	pluginv2	11.2-RELEASE-	

1 - 1 of 1

- Edit
- Mount points
- Restart
- Stop

Click on the dots, and then select “Stop” from the pop-up menu.

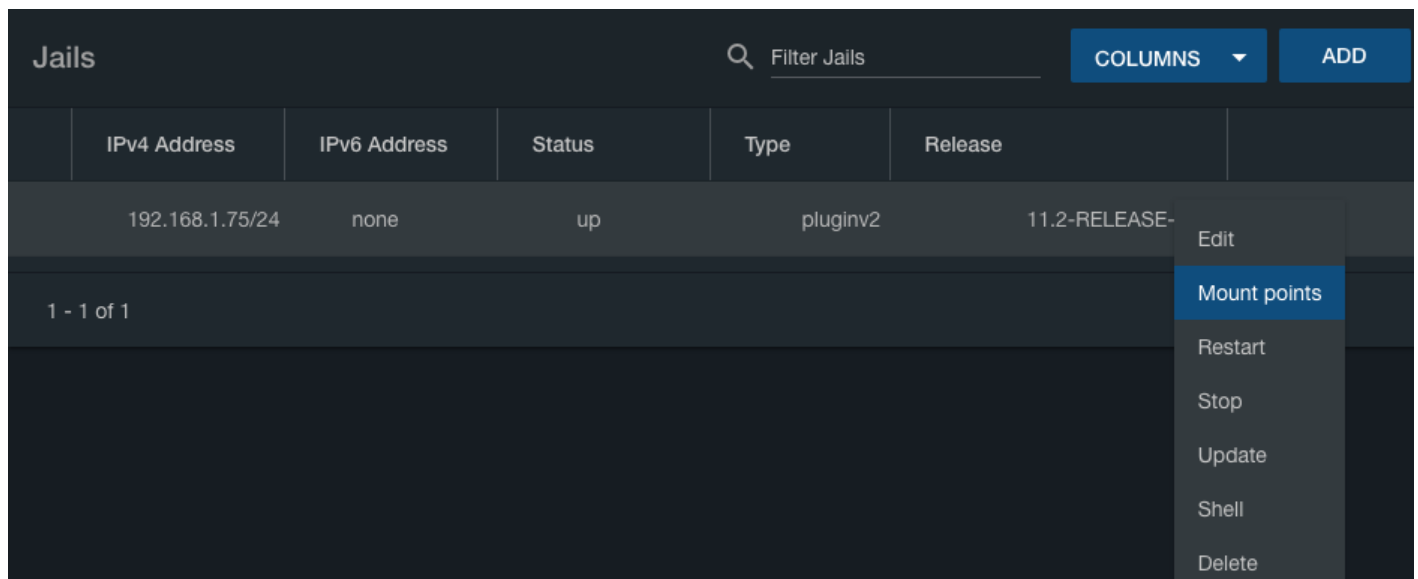


Stop

Stop the selected jails?

CANCEL STOP

You'll see a warning screen; click “Stop” again here.

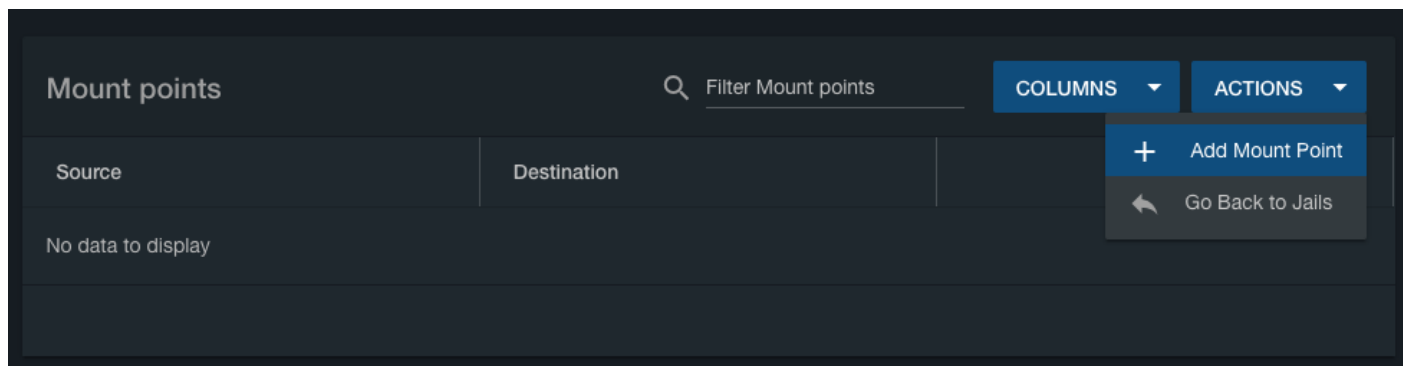


	IPv4 Address	IPv6 Address	Status	Type	Release	
	192.168.1.75/24	none	up	pluginv2	11.2-RELEASE-	

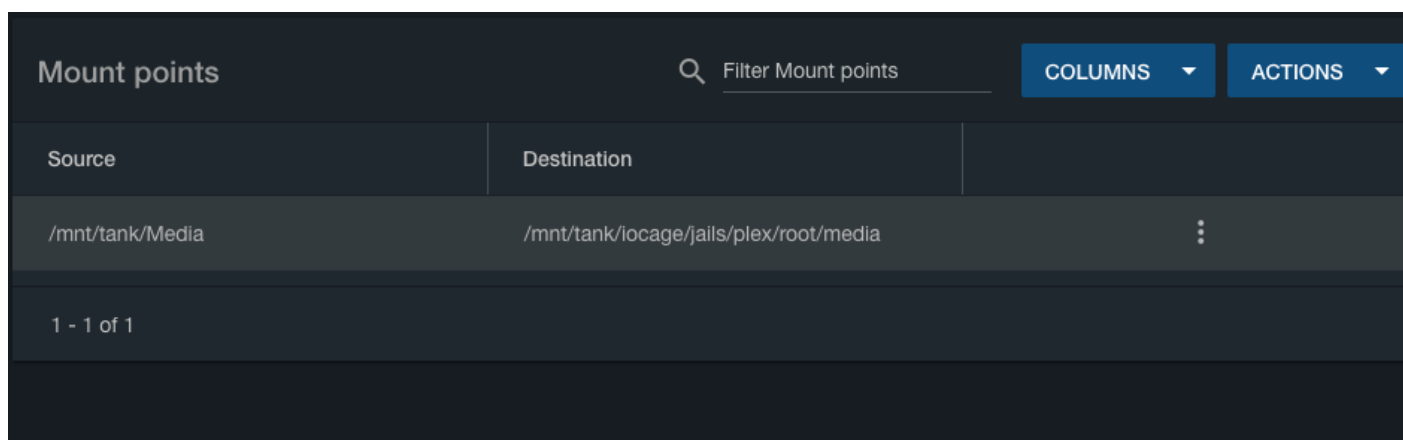
1 - 1 of 1

- Edit
- Mount points
- Restart
- Stop
- Update
- Shell
- Delete

Click on the dots again, and then select “Mount points” from the pop-up menu. You'll see the Mount Points page. Click “Actions”, then “Add Mount Point”.



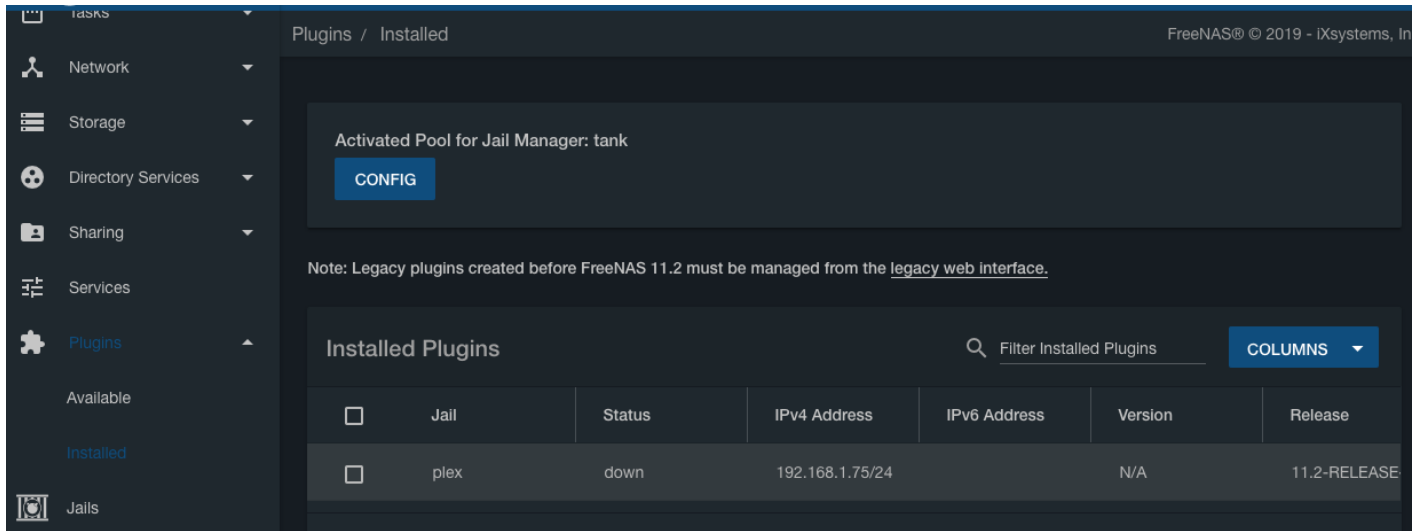
You'll see the "Add Mount Point" screen. As before, you can manually type in paths for source and destination, or click the folder icons to browse to your desired path. Note that the "Destination" paths will always begin with `/mnt/pool/iocage/jails/jailname/root/`. If you want the dataset to appear as `/media` inside the jail, the destination would read `/mnt/tank/iocage/jails/plex/root/media`. Then click "Save".



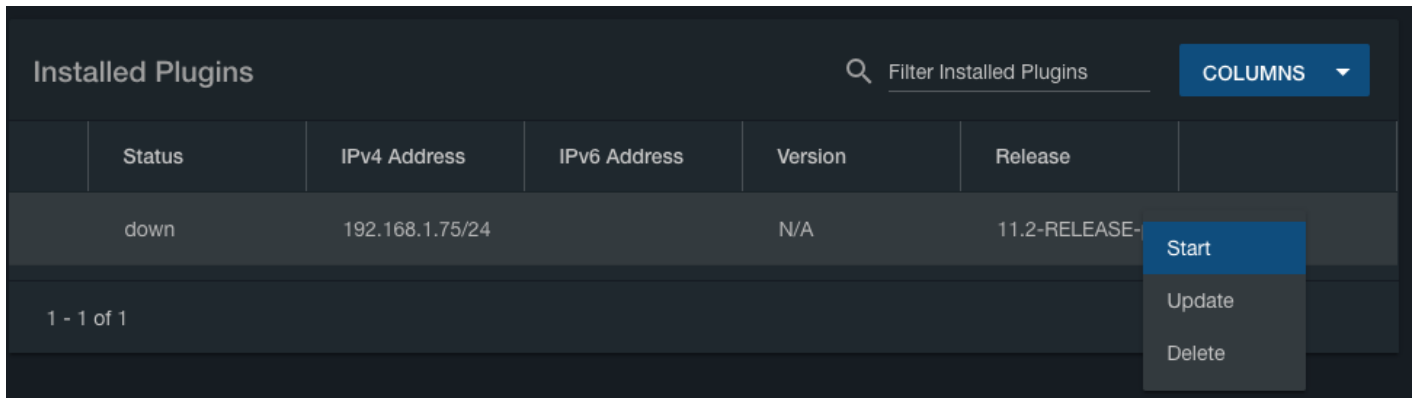
You're returned to the mount points screen, with your new mount point listed.

Restart the Plugin

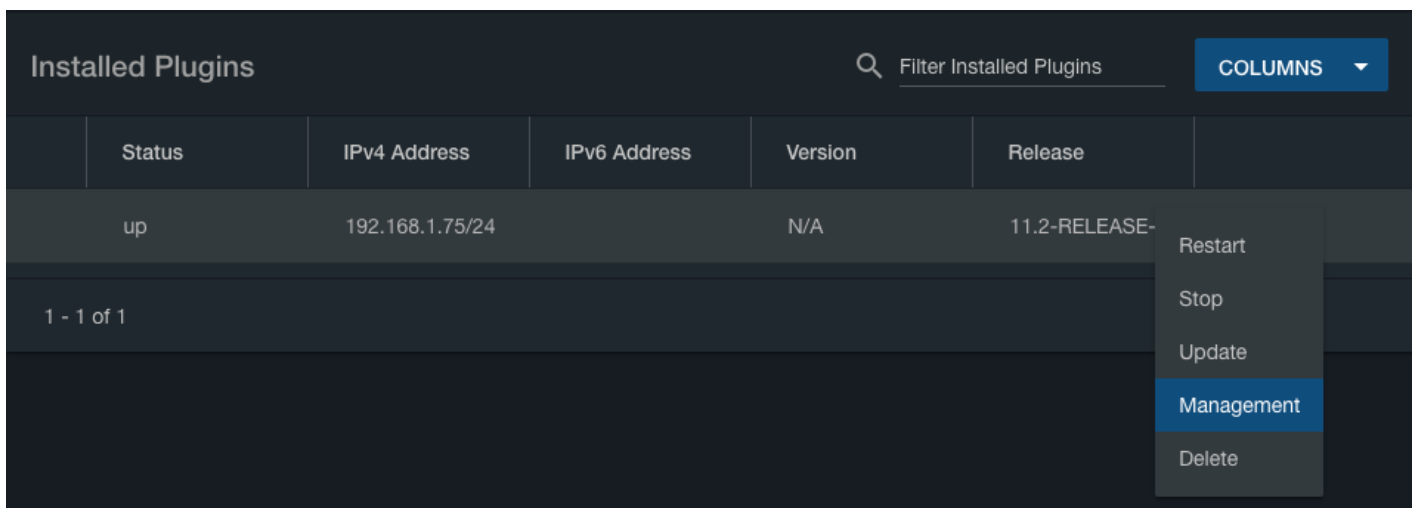
Now that the mount point has been added, you'll need to start the plugin again. Click "Plugins" in the left column, then "Installed".



Scroll sideways if necessary to see the three vertical dots on the far right.

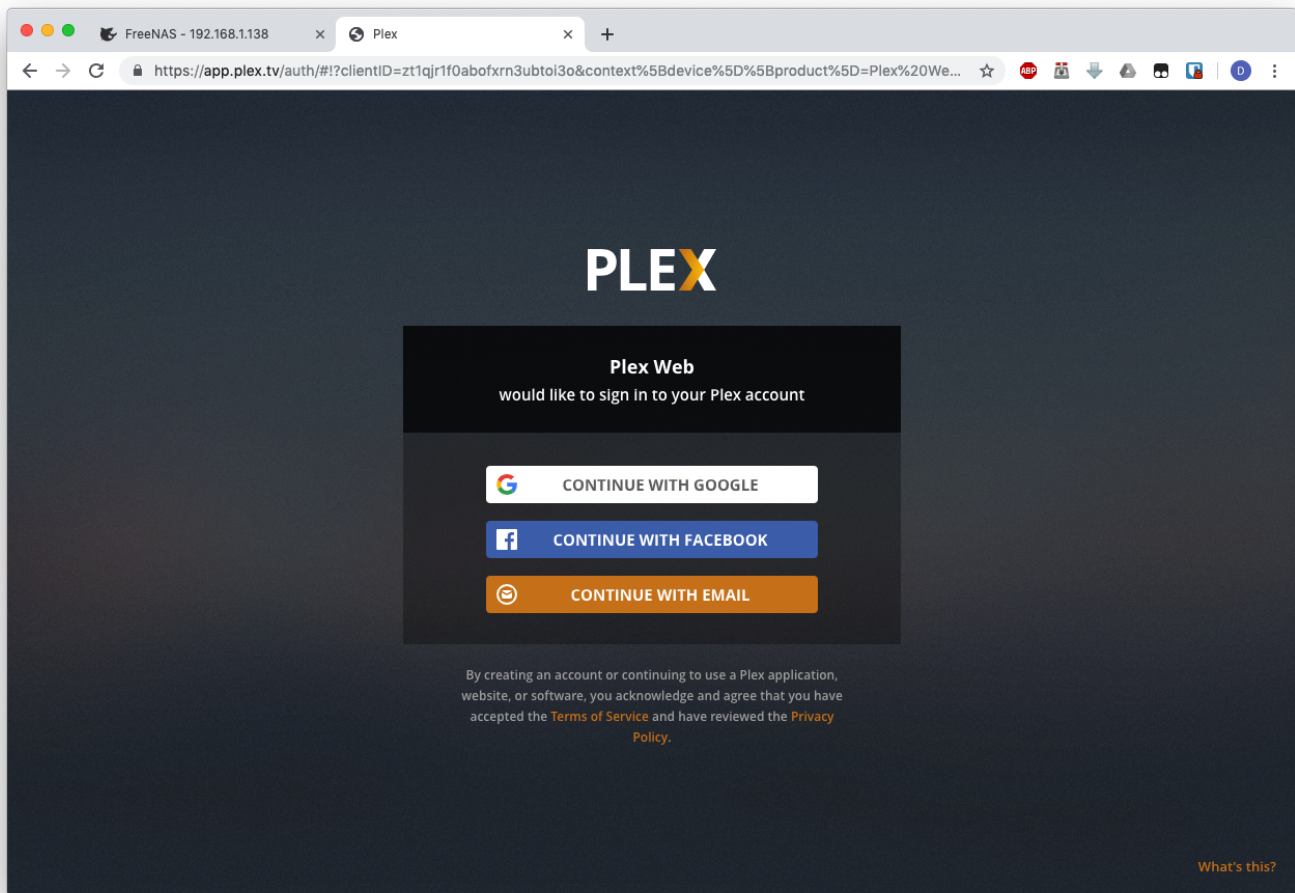


Click on the three dots, then click "Start" from the pop-up menu. To launch the Plex web interface, click on the three dots again, then click "Management".

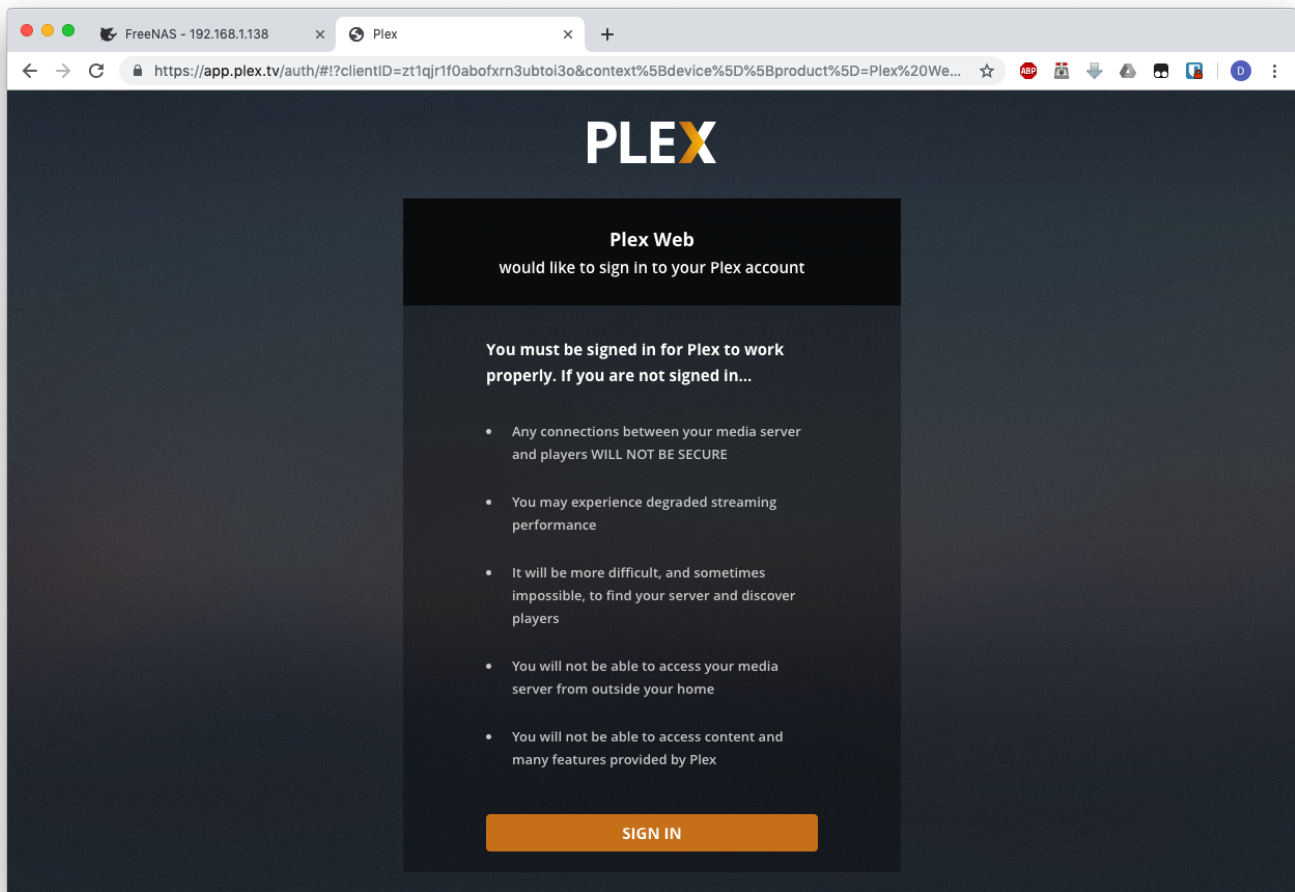


Initial Plex Setup

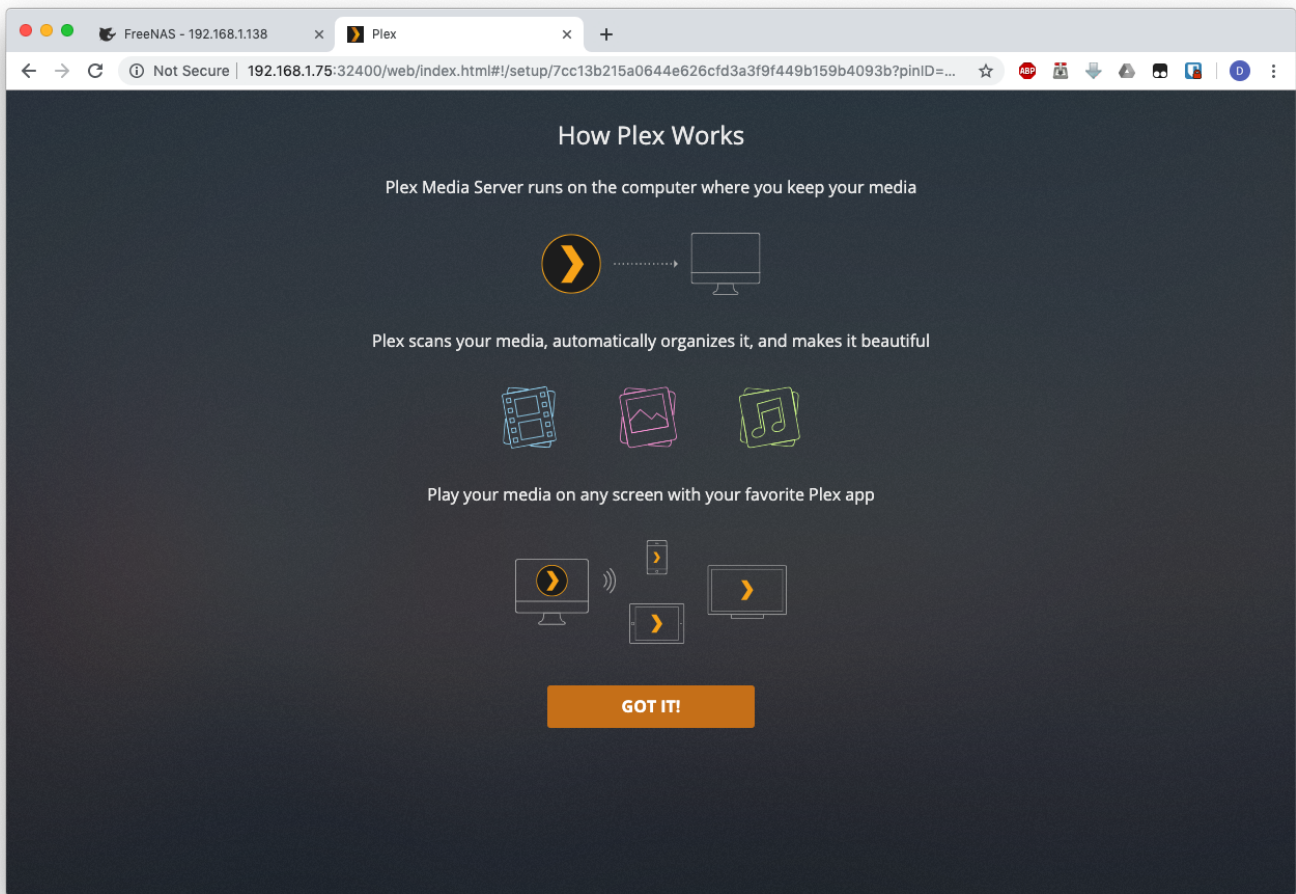
These instructions are current as of 27 May 2019. The Plex interface may change with time. The first time you launch the Plex web interface, it will ask you to log in to your plex.tv account.



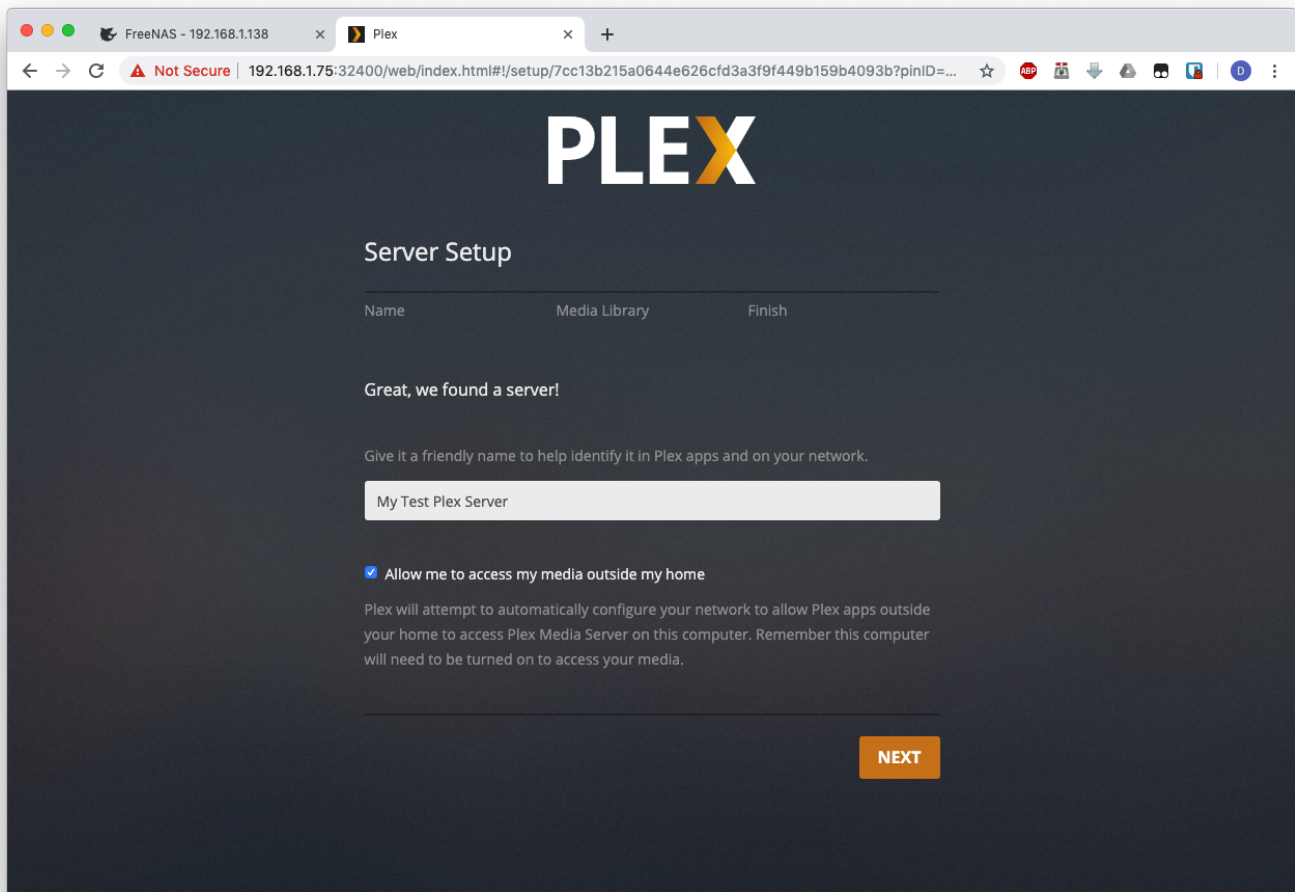
This is not required. To skip this step, click on the tiny text in the bottom-right corner that says "What's this?". You'll see this screen:



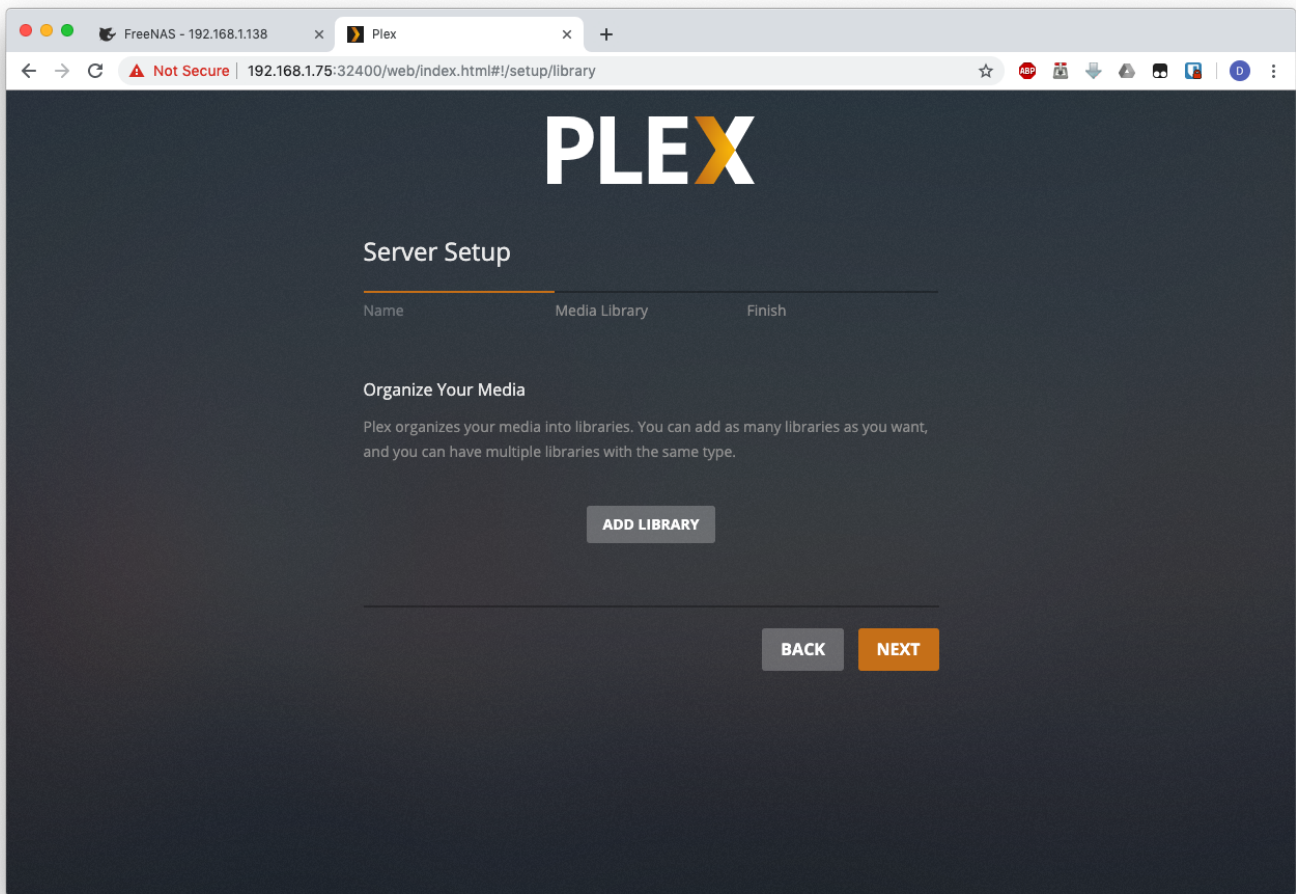
Read the screen and see if you want to register for a free plex.tv account. If not, scroll to the bottom and click on "Skip and accept limited functionality". You'll see a screen explaining how Plex works.



Click "Got it!". You'll see a page explaining the benefits of Plex Pass, which you can close by clicking the X in the upper-right corner.



The next page will ask you to name your server. You can call it anything you like. It will also offer to allow you to access your media outside your home. The security implications of this choice are beyond the scope of this guide. Click "Next" when you're finished.



You'll now be able to set up your media libraries. Click the "Add Library" button to start.

+ Add Library ✕

Select type

Add folders

Advanced

Select your library type

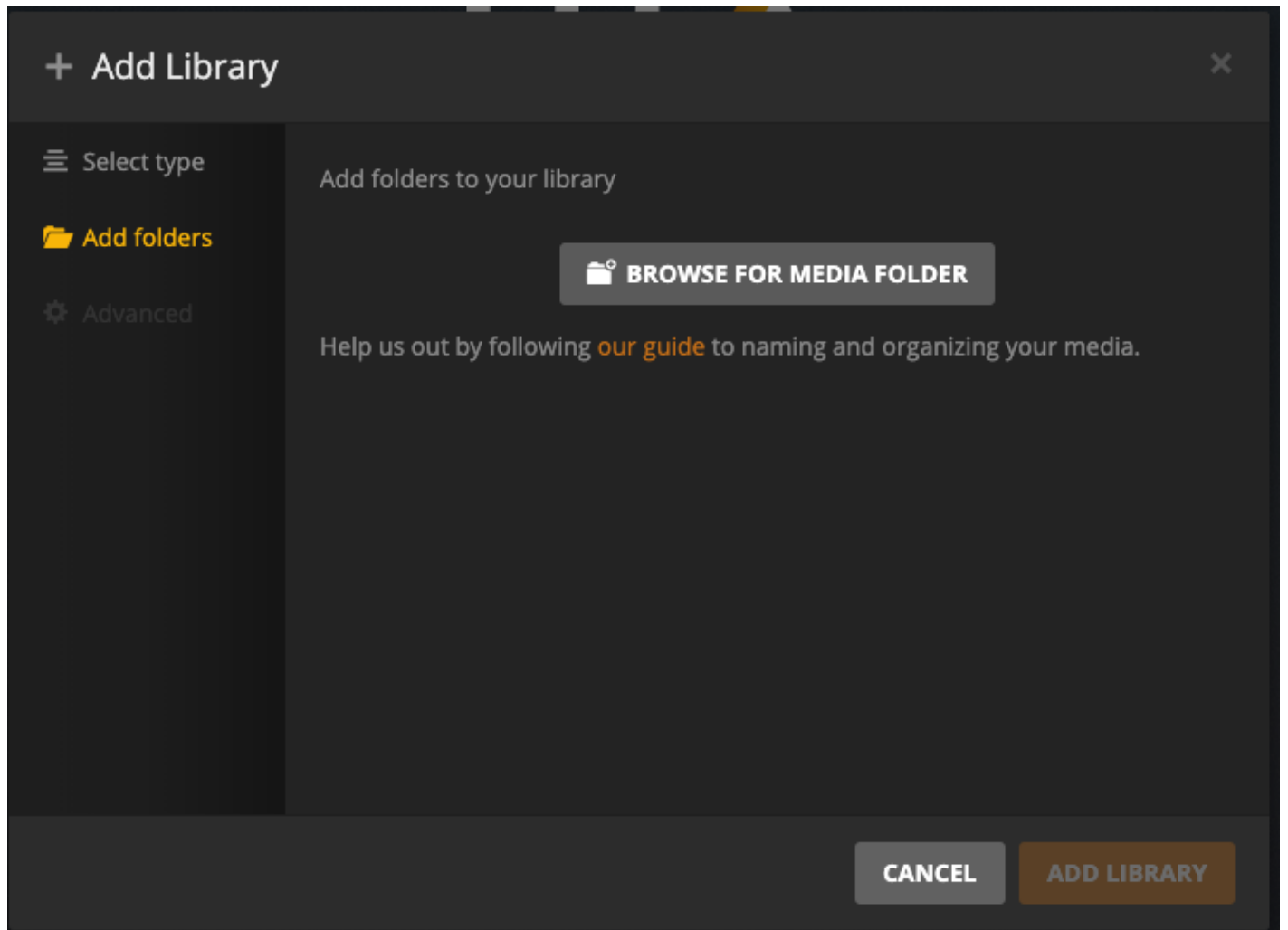
Movies TV Shows Music Photos Other Videos

Name: Movies

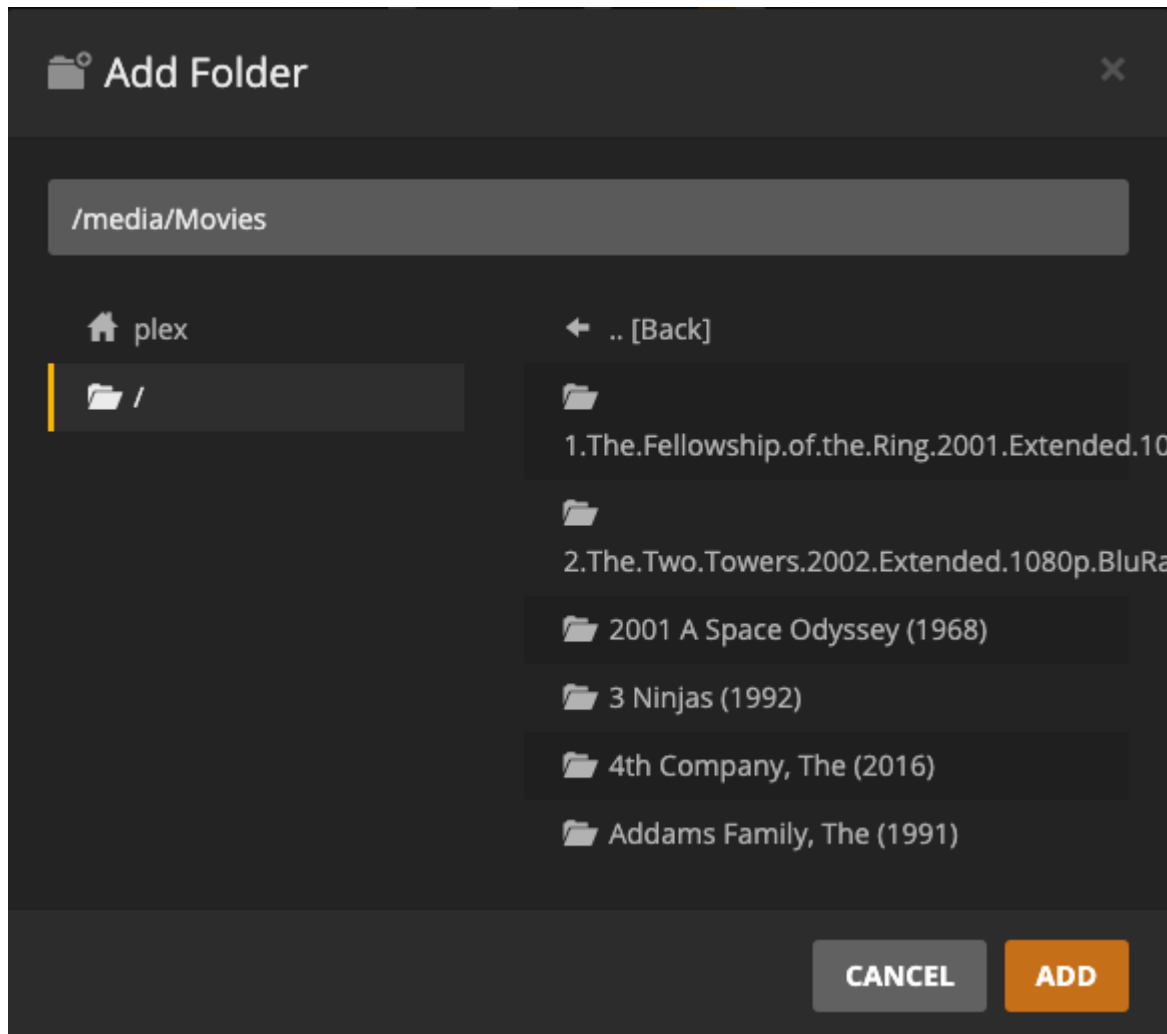
Language: English

CANCEL **NEXT**

Select the media type. For this example, I'll use movies. Name the library and select your language, and click "Next" when you're finished.



Now you'll need to add one or more folders to this library. If you've followed the instructions above, we'll need to add `/media/Movies`. Begin by clicking "Browse for media folder".



Then click to browse to the desired location. If you prefer, you can just type it in at the top of this window. Click “Add” when you've found it. Repeat as necessary to add more folders to this library, if desired. Click the “Add Library” button when you're finished.

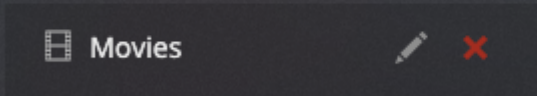


Server Setup

Name Media Library Finish

Organize Your Media

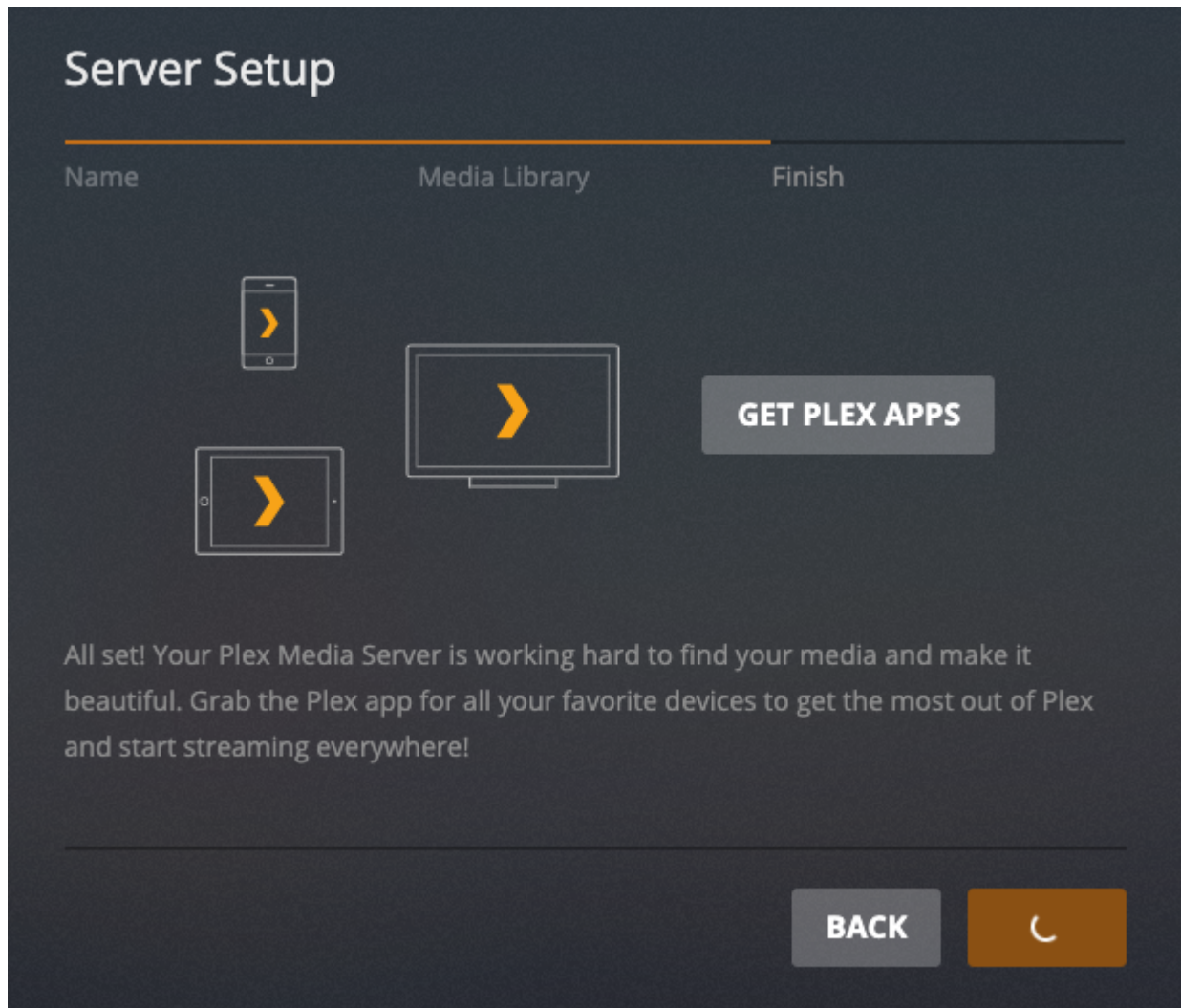
Plex organizes your media into libraries. You can add as many libraries as you want, and you can have multiple libraries with the same type.

ADD LIBRARY

 Movies  

BACK **NEXT**

You can add further libraries here (TV, Music, etc.) if desired. Click “Next” when you're done adding libraries.



The system will take a few minutes to set up the server. Once it finishes, you'll see the home screen.

From:
<https://familybrown.org/dokuwiki/> - **danb35's Wiki**

Permanent link:
https://familybrown.org/dokuwiki/doku.php?id=fester112:jails_plex&rev=1558968086

Last update: **2019/05/27 14:41**

