

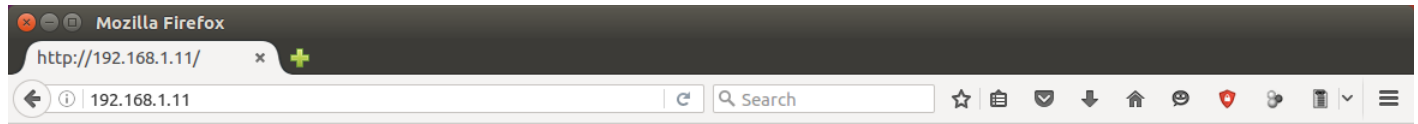
# Table of Contents

**Mounting an ISO Image File via IPMI** ..... 1



# Mounting an ISO Image File via IPMI

If your motherboard supports IPMI, you can mount image files (like the FreeNAS installer, Memtest86+, or other test utilities) through the virtual console. Your system will see the file as a local CD-ROM or flash drive. To start, open a web browser, and browse to the IP address of the IPMI interface on your server.



SUPERMICR<sup>®</sup>

Please Login

Username

Password

Log in with the username of ADMIN and the password you chose. In the IPMI window, under the **Remote Control** menu, click on **Console Redirection**.

Host Identification  
Server: 192.168.001.011  
User: ADMIN (Administrator)

Normal Refresh Logout English

System Server Health Configuration Remote Control Virtual Media Maintenance Miscellaneous

System Information FRU Reading

Summary

Firmware Revision : 03.39  
Firmware Build Time : 2015-02-03

IP address : 192.168.001.011  
BMC MAC address : 00:25:90:ce:7f:2b  
System LAN1 MAC address : 00:25:90:ca:f3:40  
System LAN2 MAC address : 00:25:90:ca:f3:41  
System LAN3 MAC address : 00:25:90:ca:f3:42  
System LAN4 MAC address : 00:25:90:ca:f3:43

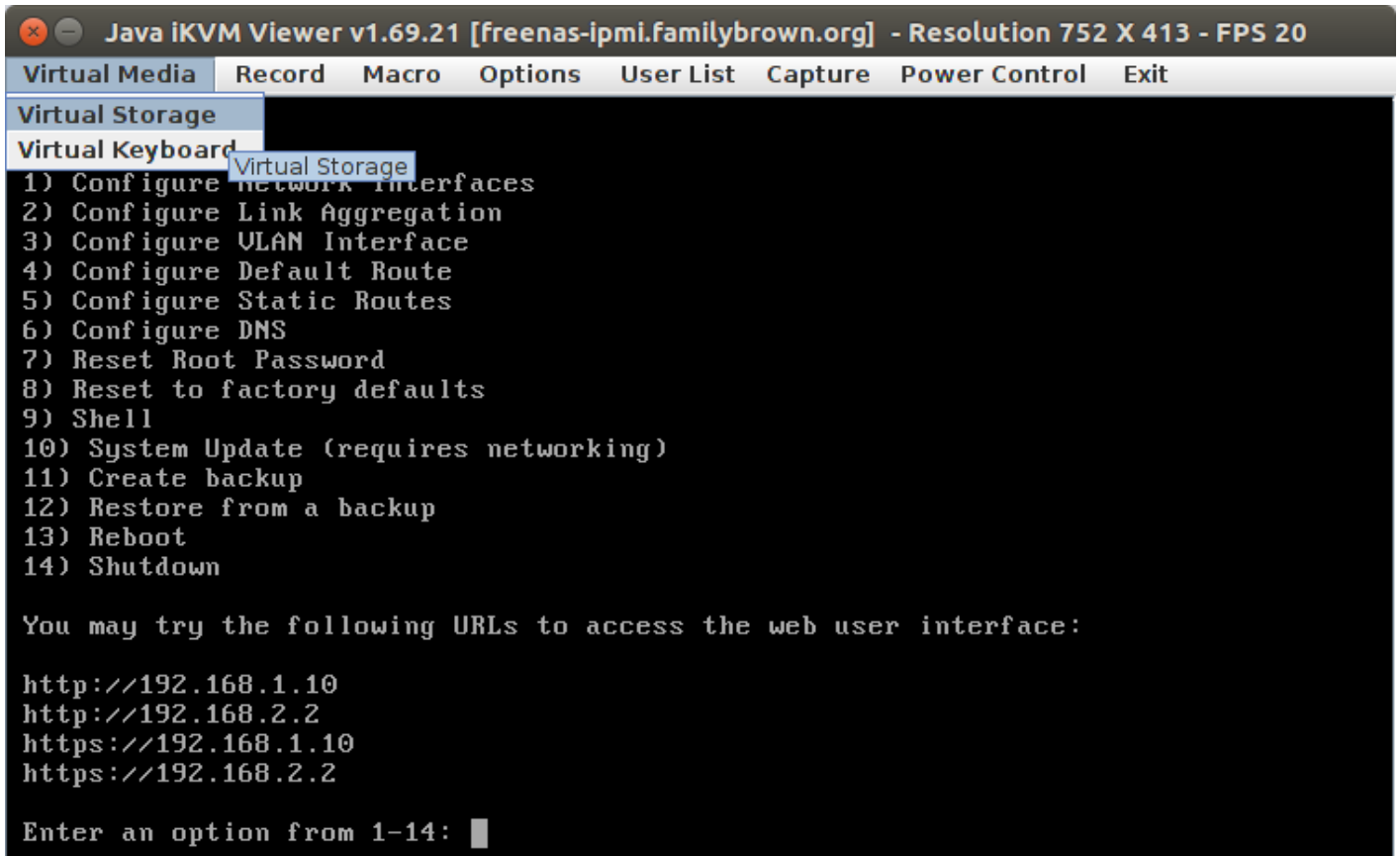
Remote Console Preview

Refresh Preview Image

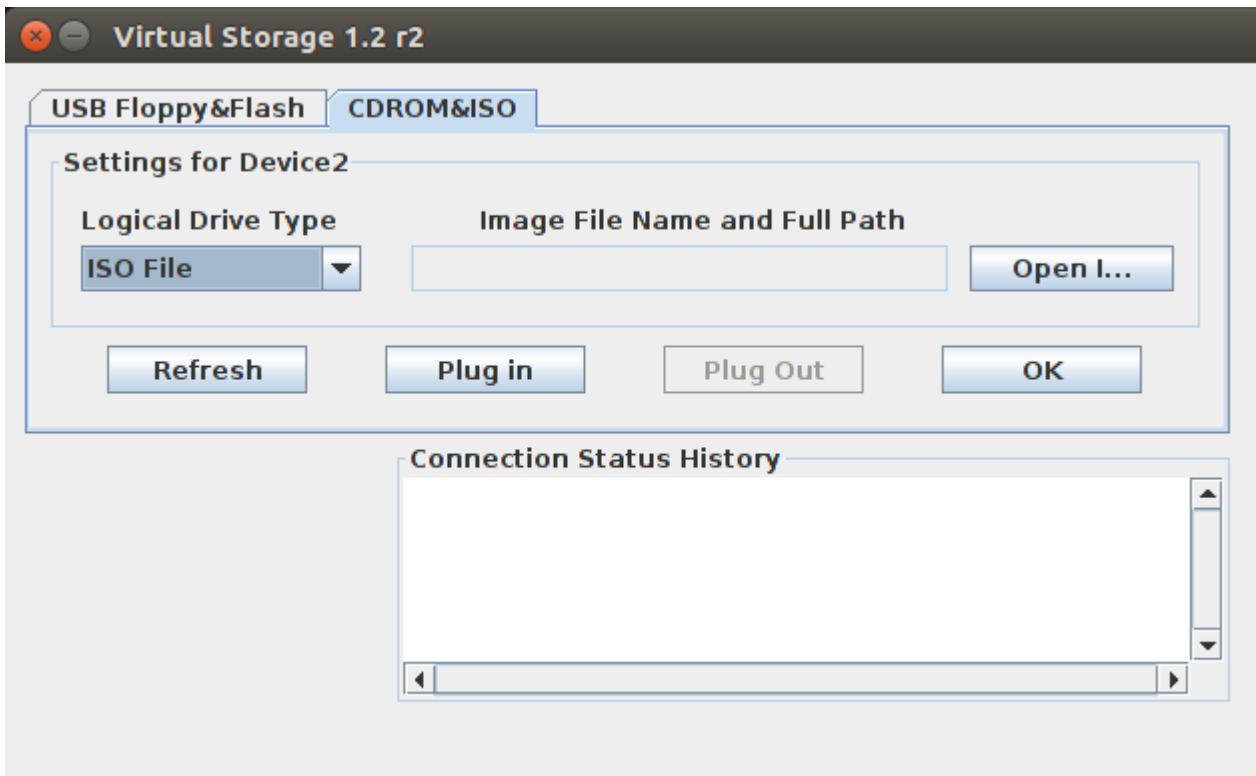
```
ses0: 4414,pass14: Element descriptor: "Slot 14"  
ses0: 4414,pass14: SAS Device Slot Element: 1 Phys at Slot 14  
ses0: phy 0: SATA device  
ses0: phy 0: parent 5902940000578f addr 59029400005793a  
ses0: 4415,pass15: Element descriptor: "Slot 15"  
ses0: 4415,pass15: SAS Device Slot Element: 1 Phys at Slot 15  
ses0: phy 0: SATA device  
ses0: phy 0: parent 5902940000578f addr 59029400005793a  
ses0: 4416,pass16: Element descriptor: "Slot 17"  
ses0: 4416,pass16: SAS Device Slot Element: 1 Phys at Slot 16  
ses0: phy 0: SATA device  
ses0: phy 0: parent 5902940000578f addr 59029400005793c  
ses0: 4417,pass17: Element descriptor: "Slot 18"  
ses0: 4417,pass17: SAS Device Slot Element: 1 Phys at Slot 17  
ses0: phy 0: SATA device  
ses0: phy 0: parent 5902940000578f addr 59029400005793d  
Jun 12 03:01:37 virtualbox se-wta(54149): 45C71930054149: SYSERR(root): hsh map  
"alias0": missing map file /etc/mail/aliases.db: No such file or directory  
Jun 12 03:01:37 virtualbox se-wta(54153): 45C71930054149: SYSERR(root): hsh map  
"alias0": missing map file /etc/mail/aliases.db: No such file or directory  
Jun 12 03:01:38 virtualbox se-wta(54177): 45C716d1054177: SYSERR(root): hsh map  
"alias0": missing map file /etc/mail/aliases.db: No such file or directory  
Jun 12 03:01:38 virtualbox se-wta(54178): 45C716d1054177: SYSERR(root): hsh map  
"alias0": missing map file /etc/mail/aliases.db: No such file or directory
```

javascript:page\_mapping('remote', 'man\_ikvm') Copyright © 2010 Super Micro Computer, Inc.

Click on the **Launch Console** button. You'll probably need to click some confirmation messages for Java; these vary from system to system. Once you've confirmed them, the console window will open. Under the **Virtual Media** menu, click on **Virtual Storage**.



In the Virtual Storage window, click on the **CD-ROM & ISO** tab. Then, under **Logical Drive Type**, select **ISO File**. Click the **Open I...** button, then browse to the .iso file you want to mount. Click the **Plug In** button, then click **OK**. Your .iso file will be attached to your server and appear as a local CD-ROM.



From:

<https://www.familybrown.org/dokuwiki/> - **danb35's Wiki**

Permanent link:

[https://www.familybrown.org/dokuwiki/doku.php?id=fester:ipmi\\_iso](https://www.familybrown.org/dokuwiki/doku.php?id=fester:ipmi_iso)

Last update: **2016/06/12 17:33**

