

Table of Contents

Installing FreeNAS 9.10 1

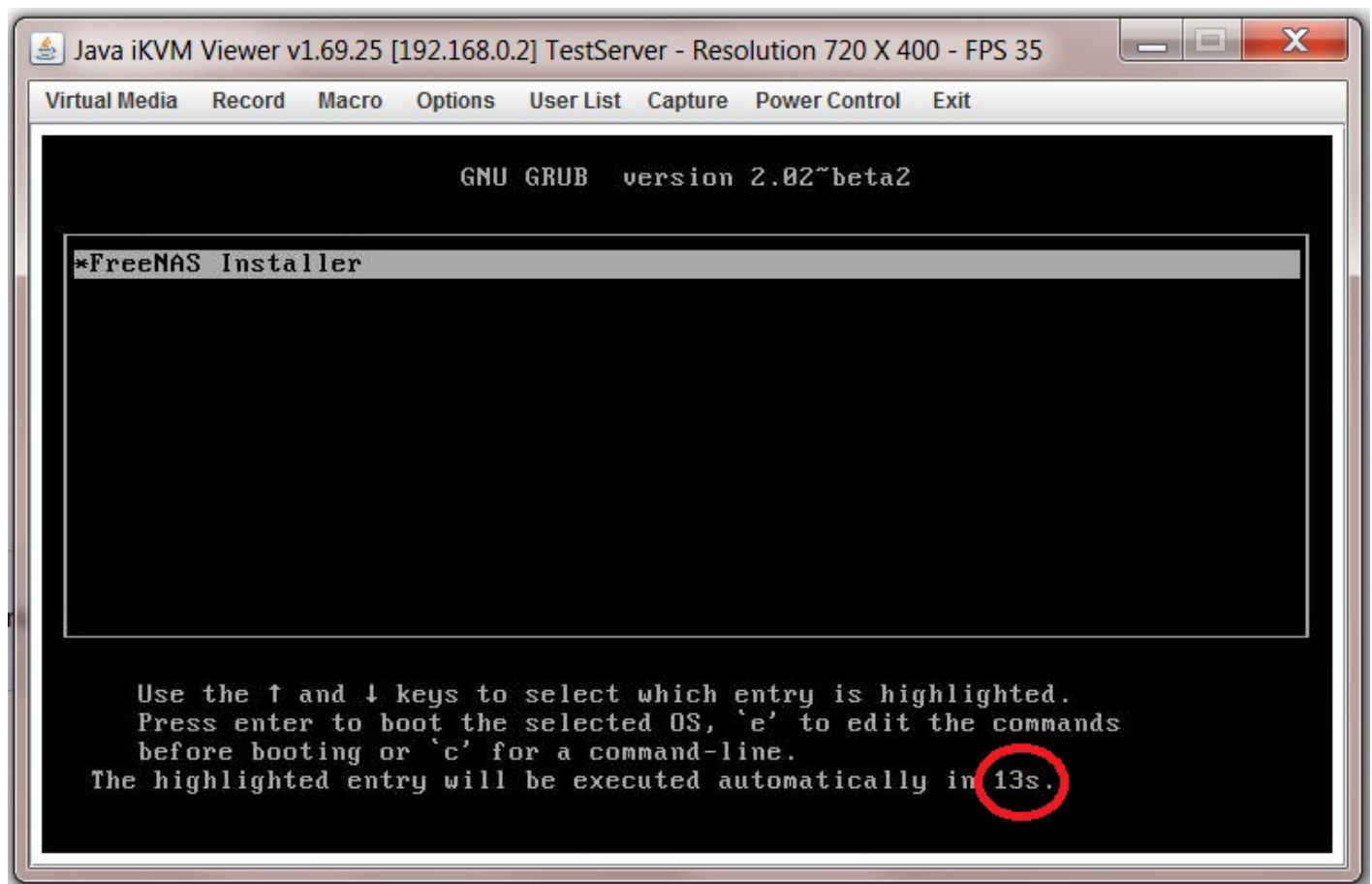
Installing FreeNAS 9.10

Start by powering down the server if it isn't powered down already.

Insert the bootable FreeNAS 9.10 installation USB stick and switch on the server.

If all goes well you will eventually be presented with the GNU GRUB screen.

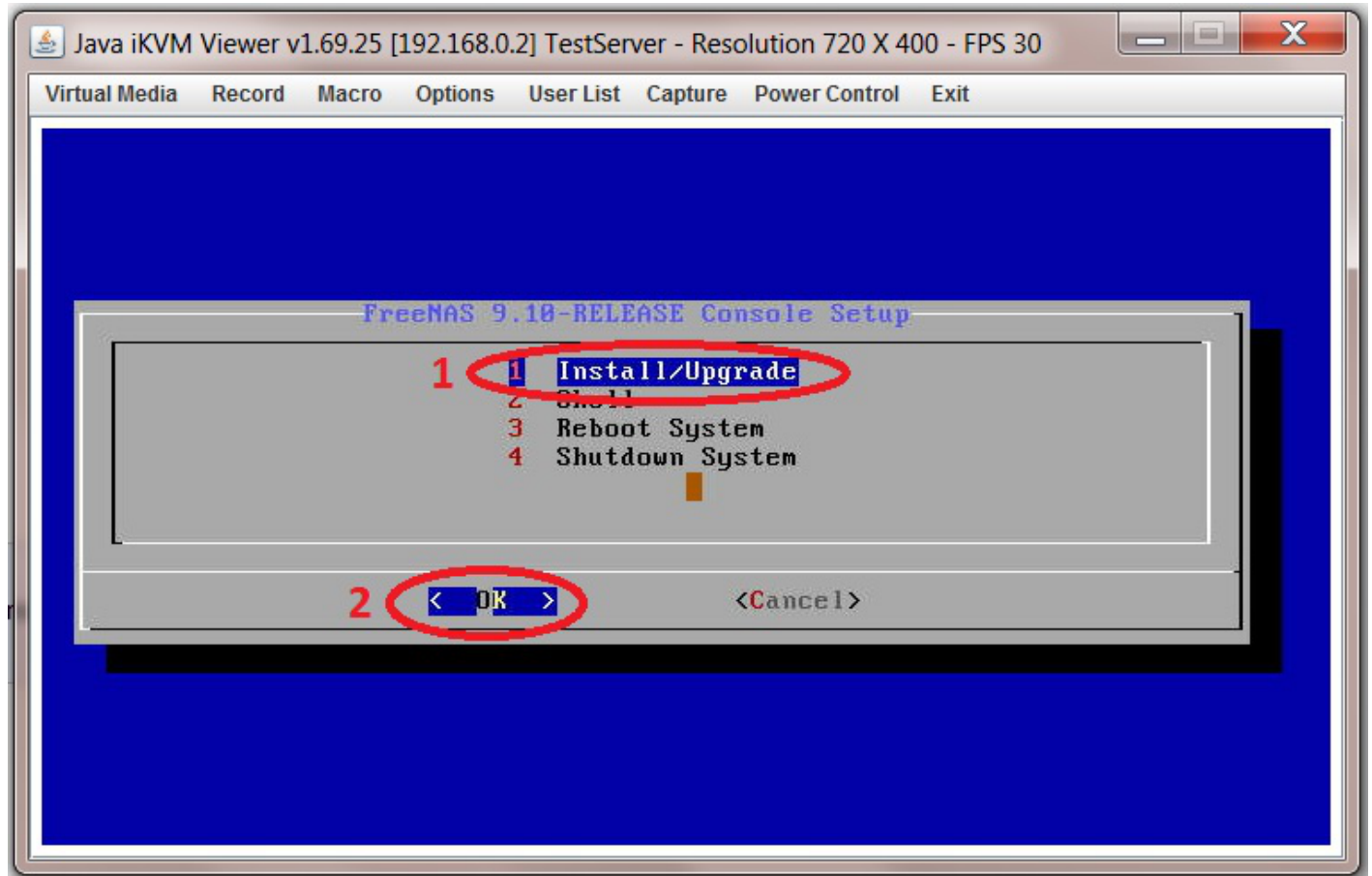
Hit the "Return/Enter" key or wait for the counter to reach zero (shown in a red circle in the screen shot) and the process will start automatically.



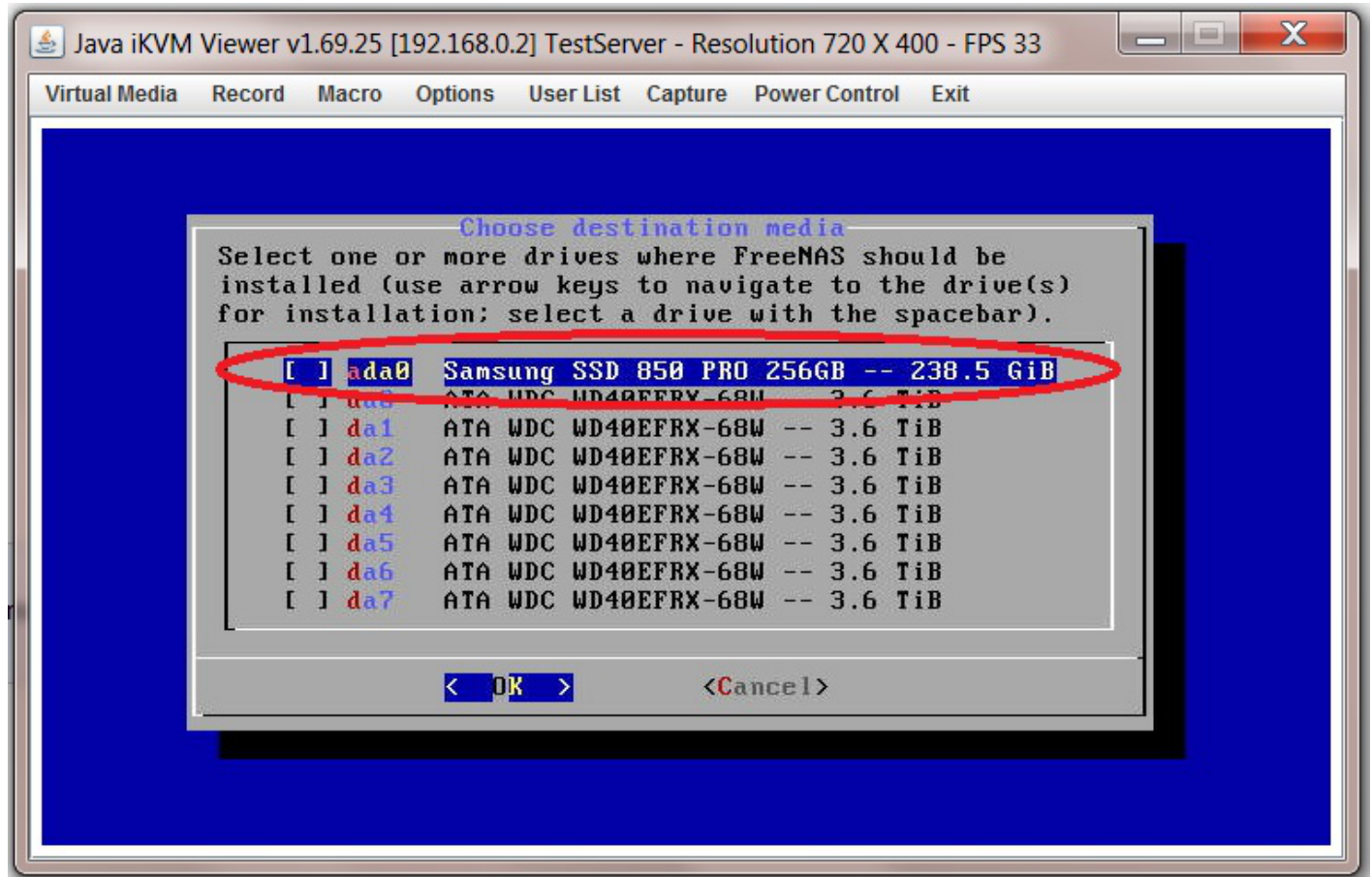
The FreeNAS console setup screen will appear.

Navigate around it using the "←→↑↓" keys and to activate your choice hit the "Return/Enter" key.

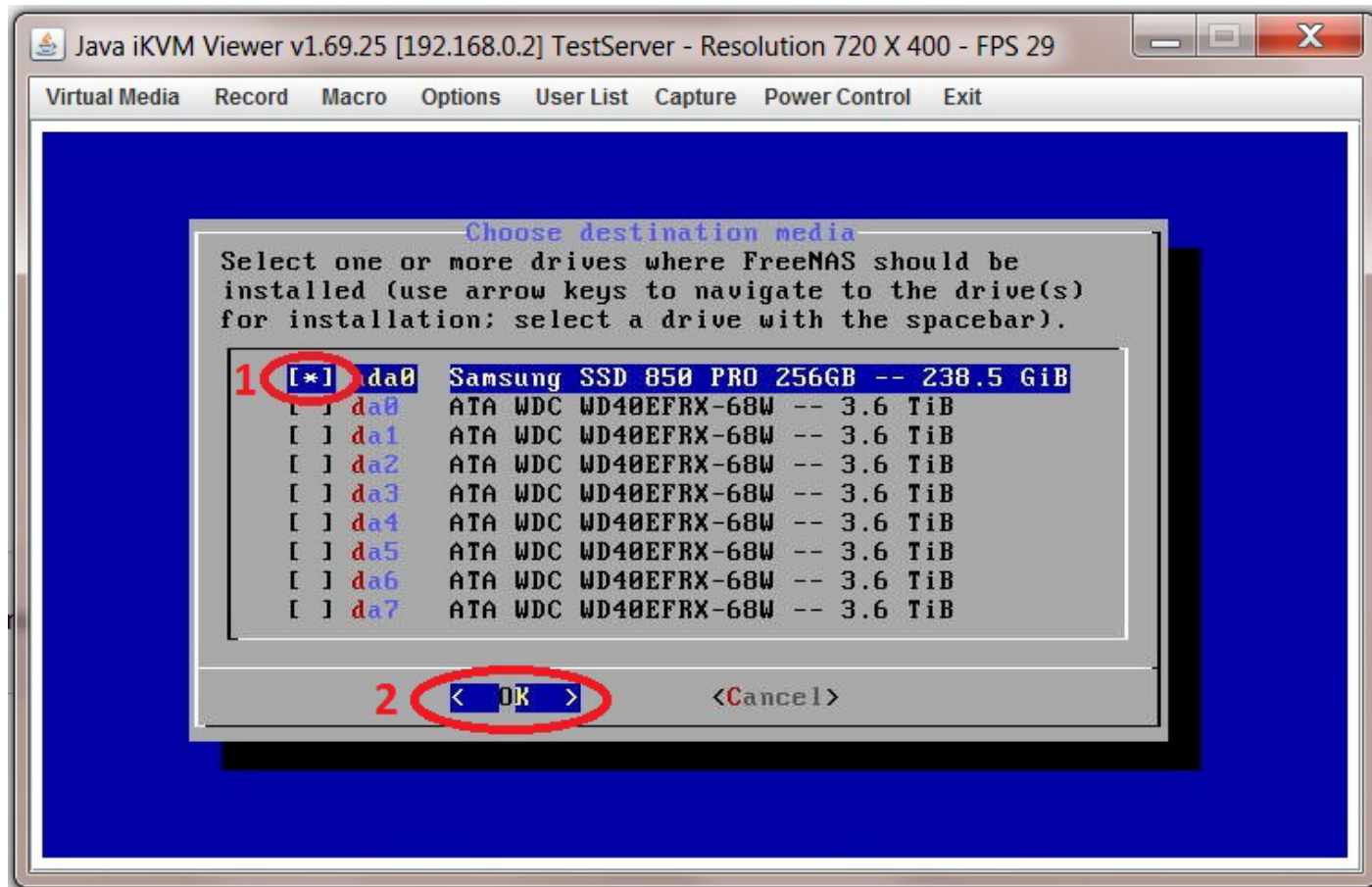
Chose option 1 "Install/Upgrade" (1), select "OK" (2) and press the "Return/Enter" key.



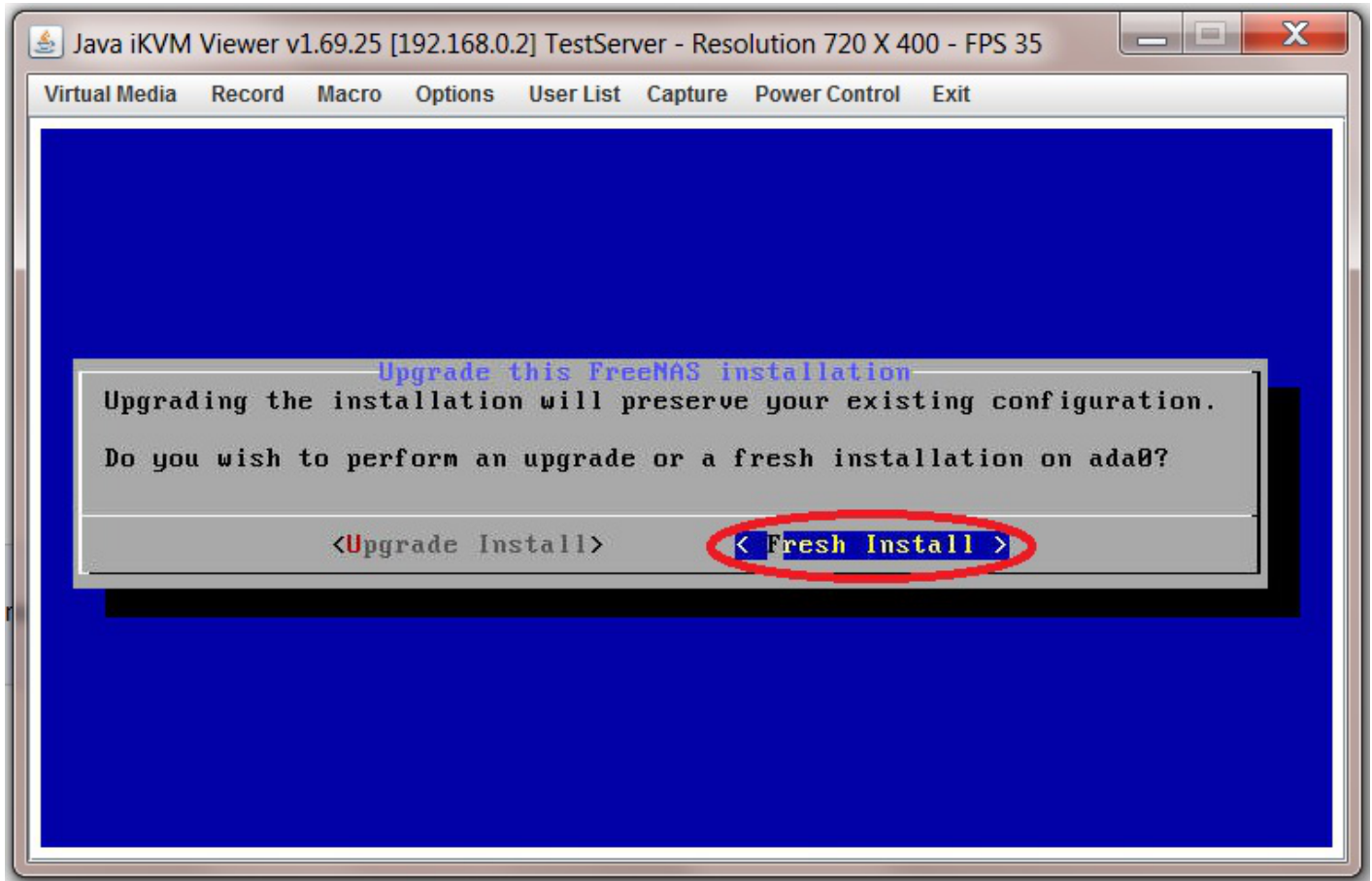
Now select the storage device you want the FreeNAS OS installed on (in Fester's case it's the SSD drive). Do not chose any of the HDDs you intend to use for your data, the FreeNAS OS cannot reside on any of the data storage disks (in Fester's server that is any of the WD40EFRX HDDs).



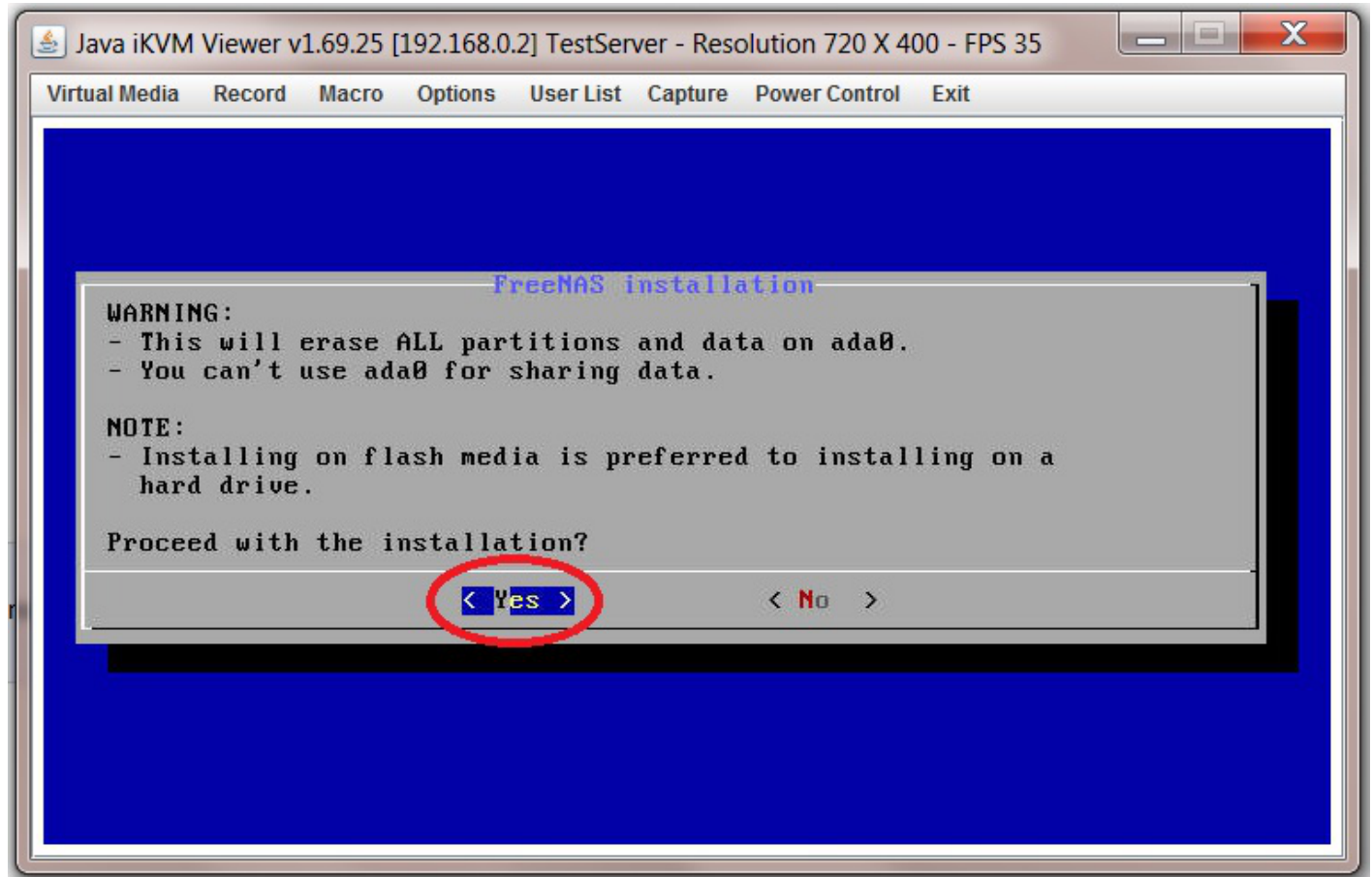
With the drive of your choice selected press the "Space Bar" key and an asterisk should appear next to the selected drive (1) now select "OK" (2) and press the "Return/Enter" key. If you want to install to two mirrored USB sticks, select them both and the installer will create the mirror.



If you see the following screen (it will only appear if FreeNAS has previously been installed on your boot device), select "Fresh Install" on the next screen and hit the "Return/Enter" key.



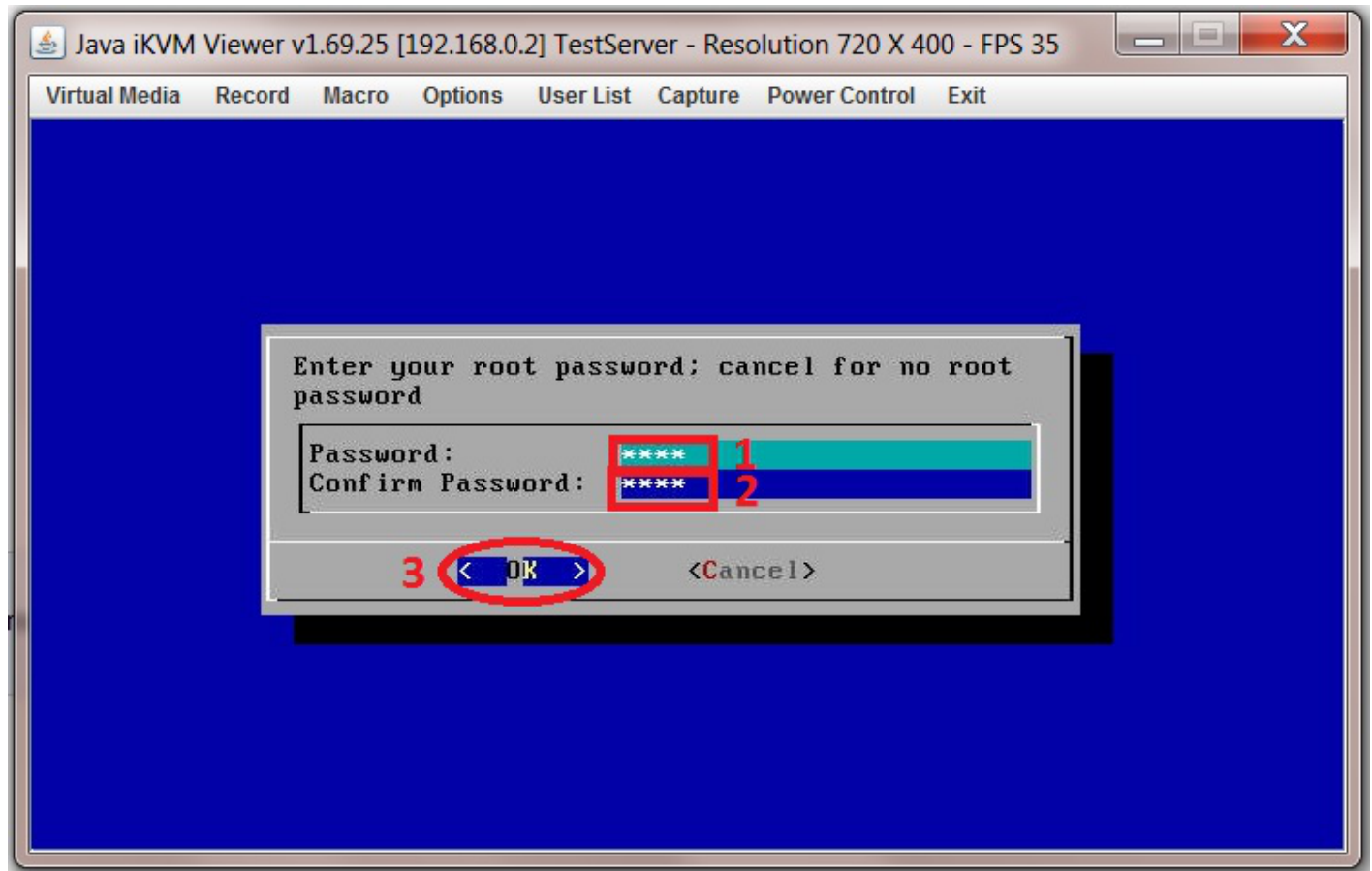
A warning screen will now appear, just select "Yes" and press the "Return/Enter" key.



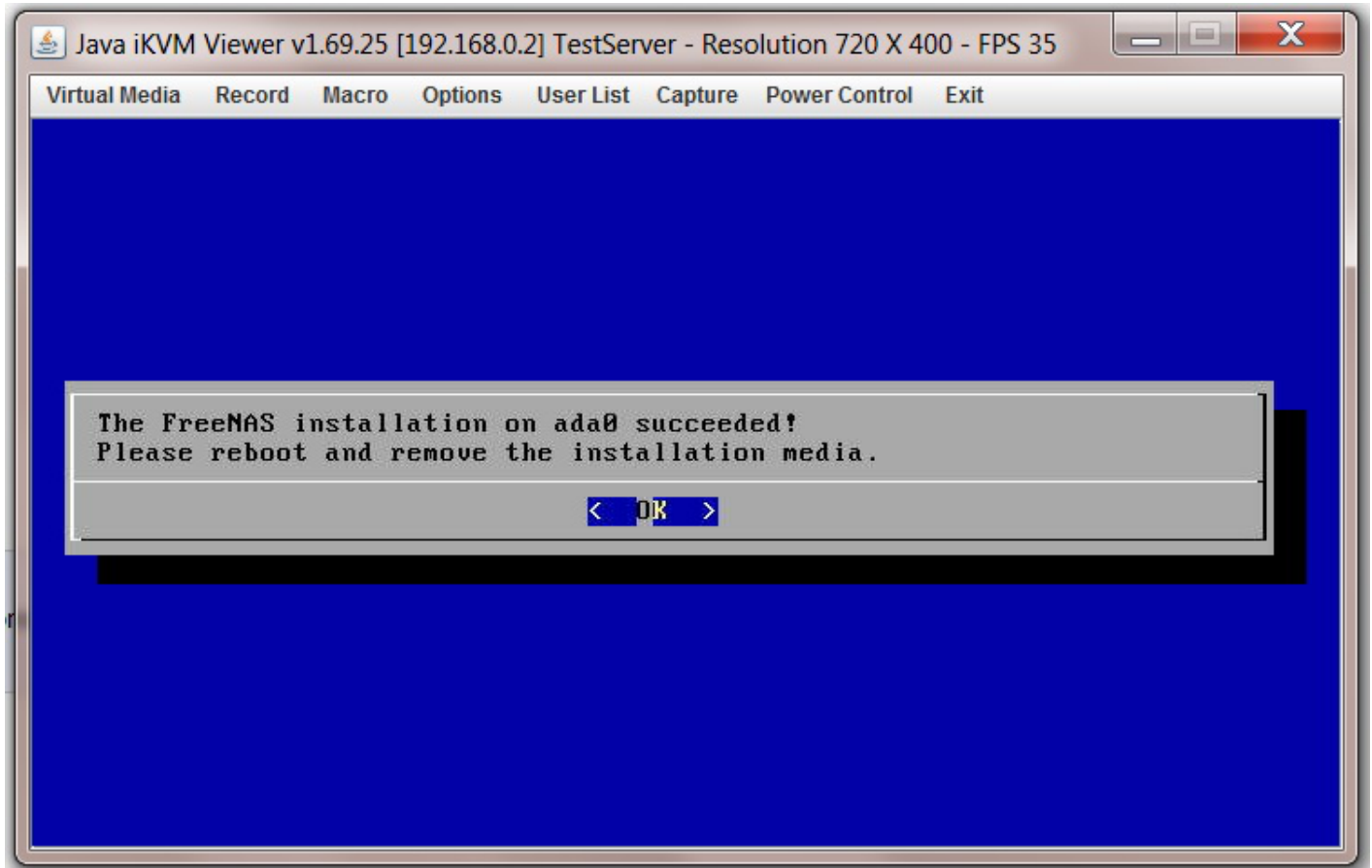
The next screen will ask you to create a login password for accessing FreeNAS. This is the final installation so a strong password (1) is recommended (you can change it later in the FreeNAS web GUI), just make sure you remember it.

Now press the "Tab" key, this should take you to the "Confirm Password" section and re-enter your password (2).

Press the "Tab" key again and this should take you to the "OK" section (3), press the "Return/Enter" key and the installation should begin.



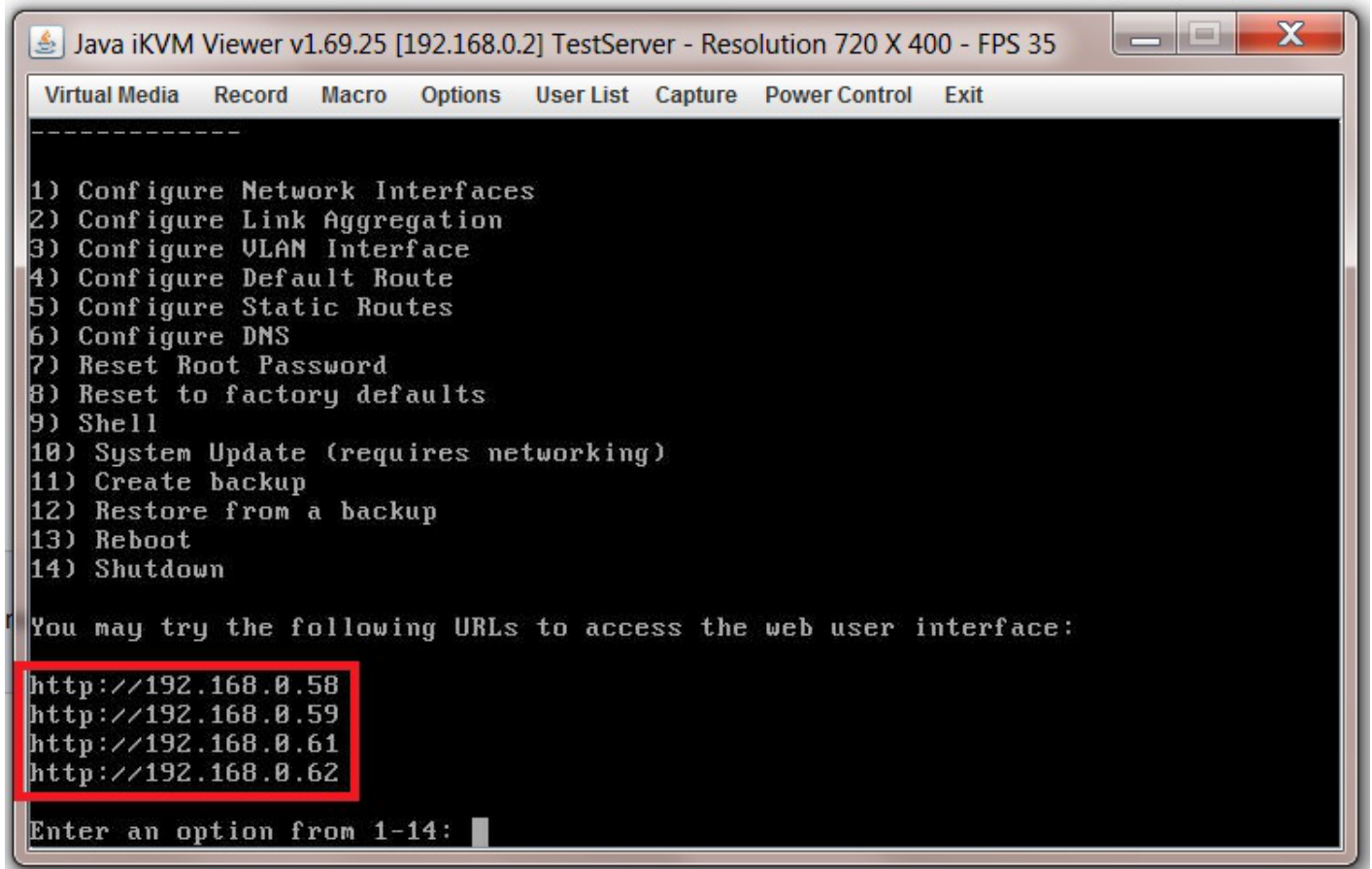
When the installation is complete you should see a screen like this. Power off the server and remove the USB stick.



Now power up the server and the first screen you encounter will be the GNU GRUB screen, don't press any keys just wait a few seconds and it will automatically continue booting up FreeNAS.

When FreeNAS has finished booting you should see a screen like this with the IP address of the FreeNAS web GUI on display (shown in red in the screen shot).

(There are 4 IP addresses on Fester's screen because there are 4 NICs on the motherboard, and he has them all plugged in. This isn't ordinarily a good configuration—only plug in one NIC.)

A screenshot of a Java iKVM Viewer window titled "Java iKVM Viewer v1.69.25 [192.168.0.2] TestServer - Resolution 720 X 400 - FPS 35". The window contains a menu with 14 options for configuring network interfaces and other system settings. The menu items are: 1) Configure Network Interfaces, 2) Configure Link Aggregation, 3) Configure VLAN Interface, 4) Configure Default Route, 5) Configure Static Routes, 6) Configure DNS, 7) Reset Root Password, 8) Reset to factory defaults, 9) Shell, 10) System Update (requires networking), 11) Create backup, 12) Restore from a backup, 13) Reboot, and 14) Shutdown. Below the menu, there is a prompt: "You may try the following URLs to access the web user interface:". Four URLs are listed: http://192.168.0.58, http://192.168.0.59, http://192.168.0.61, and http://192.168.0.62. The first four lines of the menu and the URLs are highlighted with a red box. At the bottom, there is a prompt: "Enter an option from 1-14:" followed by a cursor.

Make a note of the IP address/s for the FreeNAS web GUI, it will be needed soon.

That's FreeNAS 9.10 installed now we need to configure it.

(By using IPMI or looking it up in your router's attached devices table, you will always be able to find the FreeNAS web GUI even if it changes.)

From:
<https://familybrown.org/dokuwiki/> - danb35's Wiki

Permanent link:
https://familybrown.org/dokuwiki/doku.php?id=fester:install_installing

Last update: **2016/06/10 14:35**

